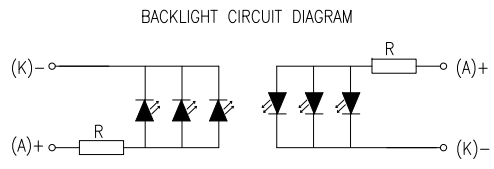
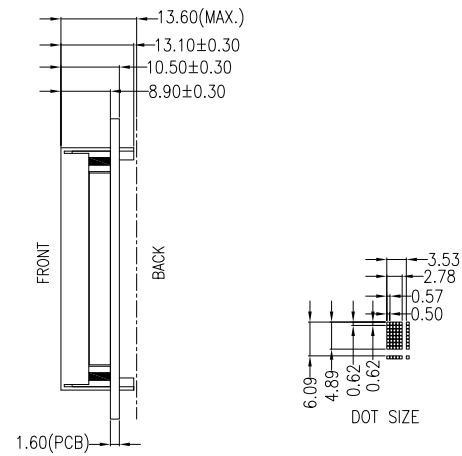
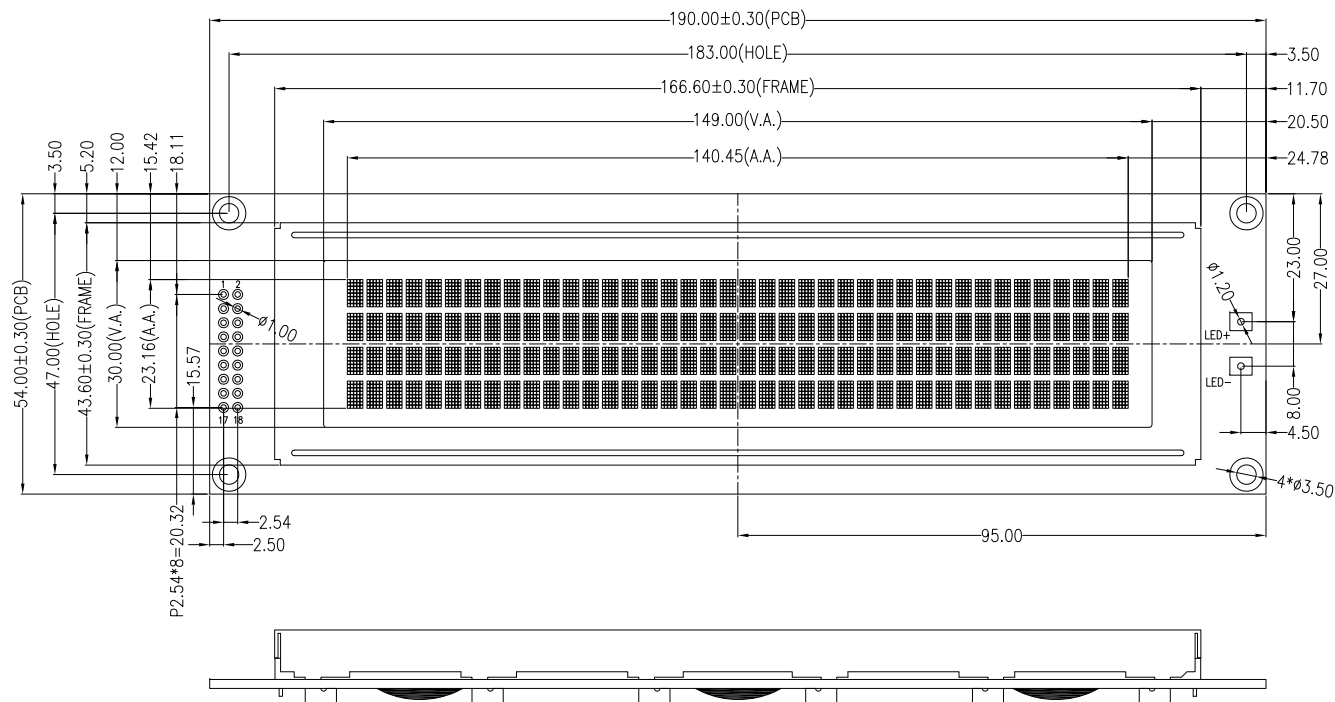
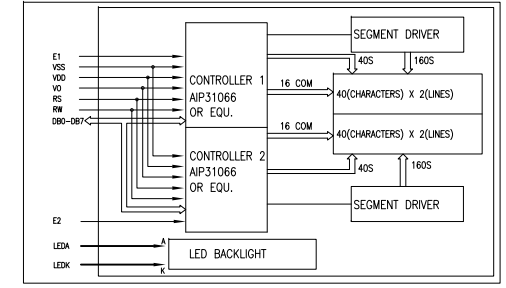


PIN DESCRIPTION	
PIN	SYMBOL
1	DB7
2	DB6
3	DB5
4	DB4
5	DB3
6	DB2
7	DB1
8	DB0
9	E1
10	R/W
11	RS
12	VO
13	VSS
14	VDD
15	E2
16	NC
17	LED+
18	LED-



DRIVER DIAGRAM



NOTES:

1. DISPLAY TYPE: STN, YELLOW-GREEN, TRANSFLECTIVE, POSITIVE
2. OPERATING VOLTAGE: VDD=5.0V, VOP=4.5V±0.3V
3. DRIVE METHOD: 1/16DUTY, 1/5BIAS
4. VIEWING DIRECTION: 6 O'CLOCK
5. DRIVER IC: AIP31066 OR EQU.
6. OPERATING TEMP.: -20°C ~ 70°C
7. STORAGE TEMP.: -30°C ~ 80°C
8. LED BACKLIGHT: YELLOW-GREEN LED, If=90mA, VLED=5.0V
9. GENERAL TOLERANCE: ±0.20MM
10. ROHS COMPLIANT

DRAWN BY: CAROL 2023.04.13			MODULE P/N:
			MI4004J
CHECKED BY:	APPROVED BY:	UNIT: mm	DESCRIPTION:
VERSION NO: 01	VER. REVISED DESCRIPTION	SHEET NO.: 1/1	CHARACTER MODULE

01	FIRST ISSUE	CAROL	2023.04.13
VER.	REVISED DESCRIPTION	REVISER	DATE