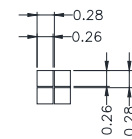
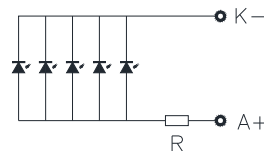


PIN ASSIGNMENT	
PIN	SYMBOL
1	ESD
2	VM
3	VG
4	VO
5	XV0
6	CAP1P
7	CAP1N
8	VDDA
9	VDD1
10	VSS
11	CSB
12	AO
13	RSTB
14	SCLK(SCL)
15	MOSI(SDA)
16	ESD

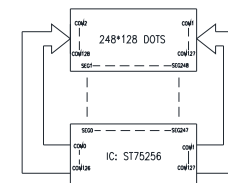


BACKLIGHT CIRCUIT DIAGRAM



DETAIL A  
SCALE 10:1

FUNCTION TABLE



NOTES:

1. DISPLAY TYPE: WFSTN POSITIVE.
2. POLARIZER MODE: TRANSFLECTIVE.
3. OPERATING VOLTAGE: VOP=14V, VDD=3.3V.
4. DRIVE METHOD: 1/128DUTY,1/12BIAS.
5. VIEWING DIRECTION: 6 O'CLOCK.
6. IC DRIVER: ST75256.
7. OPERATING TEMP: -20°C ~ 70°C.
8. STORAGE TEMP: -30°C ~ 80°C.
9. LED BACKLIGHT: WHITE BACKLGIHT.
10. GENERAL TOLERANCE: ±0.3.
11. RoHS COMPLIANT.

VER.	REVISED DESCRIPTION	REVISER	DATE
04	CORRECT PIN14 AND PIN15 DEFINITIONS.	CAROL	2020.07.27
03	ADD FPC BACK DETAIL.	CAROL	2020.07.22
02	ADD FPC REAR VIEW.	CAROL	2020.07.17
01	FIRST ISSUE	CAROL	2020.07.10

				MULTI-INNO TECHNOLOGY CO.,LTD.			
DRAWN BY:	CAROL	2020.07.10		MODULE P/N:			
CHECKED BY:			SCALE : 1/1	M1248128A-G-1			
APPROVED BY:			UNIT: mm	DESCRIPTION:			
VERSION NO:	03		SHEET NO.: 1/1	GRAPHIC MODULE			