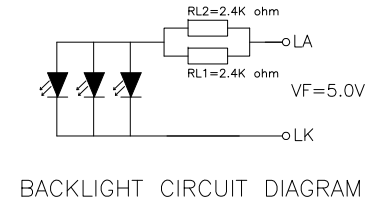
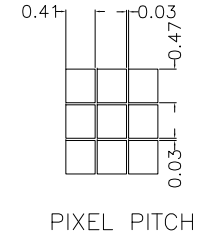
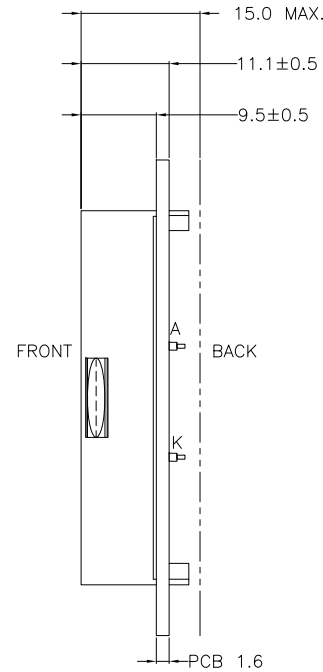
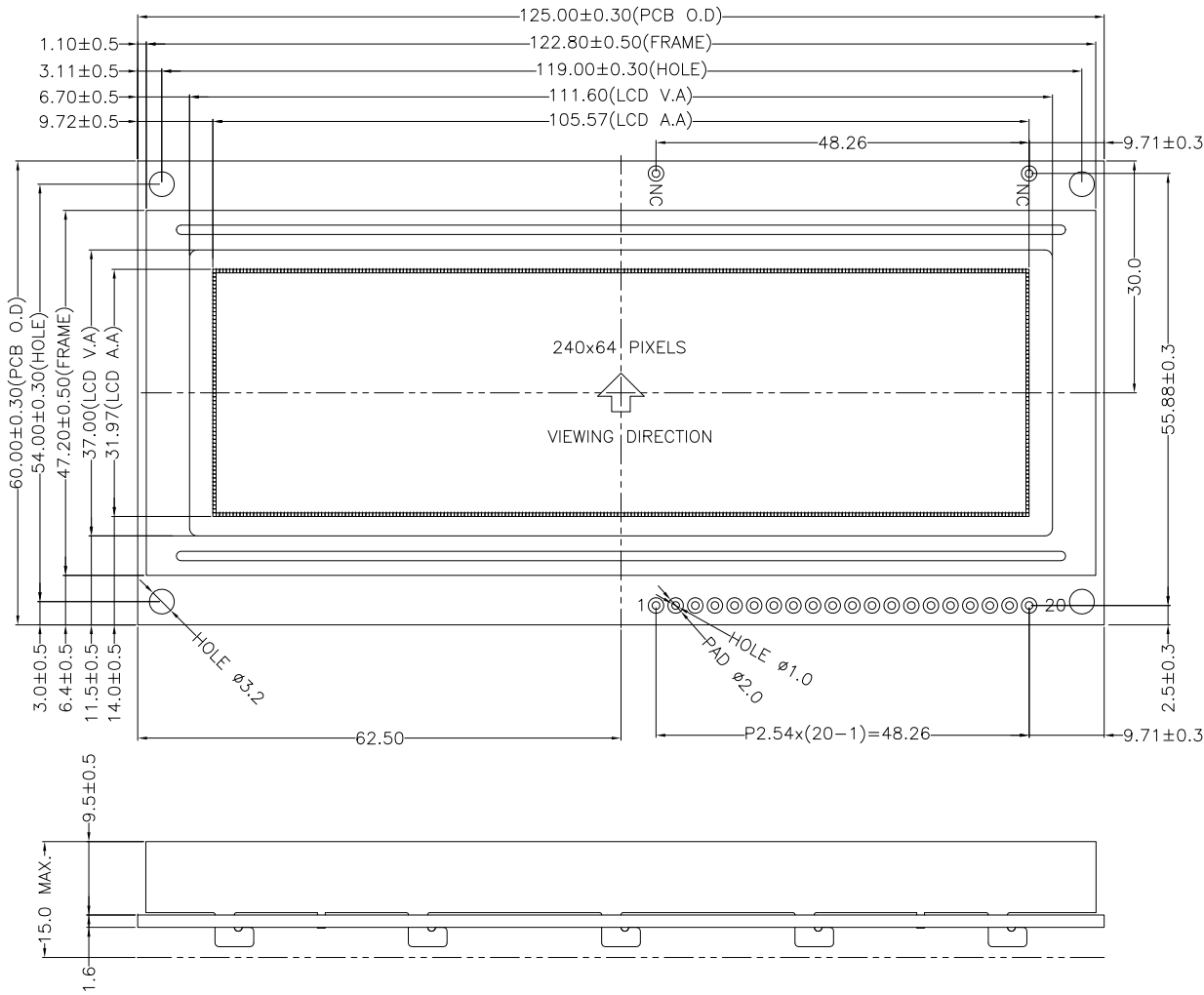
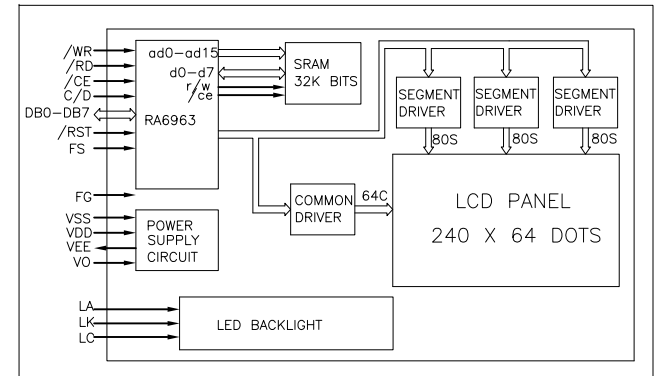


PIN ASSIGNMENT	
1	VSS
2	VDD
3	VO
4	C/D
5	/RD
6	/WR
7	DB0
8	DB1
9	DB2
10	DB3
11	DB4
12	DB5
13	DB6
14	DB7
15	/CE
16	RES
17	VEE
18	LC
19	LK
20	LA



DRIVER DIAGRAM



NOTES:

1. DISPLAY TYPE: STN, GREY, POSITIVE, TRANSFLECTIVE
2. OPERATING VOLTAGE: VDD=5.0V, VLCD=8.5V
3. VIEWING DIRECTION: 6:00 O'CLOCK
4. DRIVE METHOD: 1/64 DUTY, 1/9 BIAS
5. DRIVER IC: RA6963 OR COMPATIBLE
6. OPERATING TEMP.: -20°C ~ 70°C
7. STORAGE TEMP.: -30°C ~ 80°C
8. BACKLIGHT: WHITE LED, IF=60MA, VF=5.0V
9. COLOR OF IRON FRAME: BLACK
10. GENERAL TOLERANCE: ±0.2MM
11. ROHS COMPLIANT



MULTI-INNO TECHNOLOGY CO.,LTD.

01	FIRST ISSUE	CAROL	2021.05.21	APPROVED BY:	SCALE : 1/1	MODULE P/N:
VER.	REVISED DESCRIPTION	REVISER	DATE	VERSION NO:	UNIT: mm	MI24064S-1
				01	SHEET NO.: 1/1	DESCRIPTION: GRAPHIC MODULE