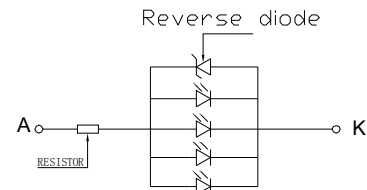
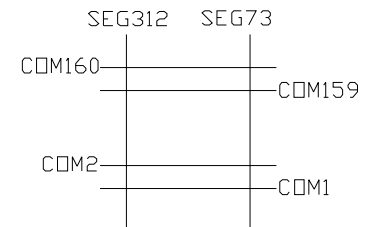


DOTS DETAIL
SCALE:30:1



BACKLIGHT CIRCUIT DIAGRAM


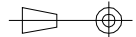


PIN	SYMBOL
1	VLCD
2	VS+
3	VS-
4	VB0-
5	VB1-
6	VB1+
7	VB0+
8	VDD
9	VSS
10	NC(TST4)
11	BM0
12	CS0
13	CD
14	WR1
15	WR0
16	RST
17	D0
18	D1
19	D2
20	D3
21	D4
22	D5
23	D6
24	D7

NOTES:

- LCD MODE: FSTN/POSITIVE/TRANSFLECTIVE.
- VIEWING DIRECTION: 6:00.
- DRIVER IC: UC1698U.
- OPERATING TEMP: -25°C ~ 70°C.
- STORAGE TEMP: -40°C ~ 85°C.
- LED BACKLIGHT: SIDE LED/WHITE.
- DUTY=1/160,BIAS=1/12,VDD=3V;Vlcd=16.5V
- RECOMMEND CONNECTOR: XF2W-2415-1A(ORMON)
- GENERAL TOLERANCE: ±0.3mm.
- THIS DISPLAY CAN WORK NORMALLY AT ALTITUDE OF 5000m.
- RoHS COMPLIANT.

VER.	REVISED DESCRIPTION	DATE
02	Add some labels on the drawing.	2016.12.28
01	FIRST ISSUE	2015.12.31

 MULTI-INNO TECHNOLOGY CO.,LTD.			
DRAWN BY:	JACK 2016.12.28	SCALE : 1/1	MODULE P/N:
CHECKED BY:		UNIT: mm	M1240160D-G-1
APPROVED BY:			DESCRIPTION:
VERSION NO:	02		GRAPHIC MODULE