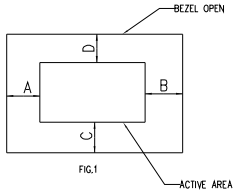
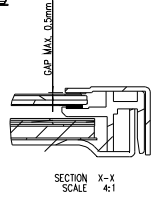


4-M3 USER HOLES
MAX. SCREW LENGTH 3.0mm



PIN DESCRIPTION FOR CN1	
PIN	SYMBOL
1	VCC
2	VCC
3	NC
4	LR/UD
5	RX0-
6	RX0+
7	GND
8	RX1-
9	RX1+
10	NC
11	RX2-
12	RX2+
13	GND
14	RXCLK-
15	RXCLK+
16	GND
17	RX3-
18	RX3+
19	NC
20	SEL6/8

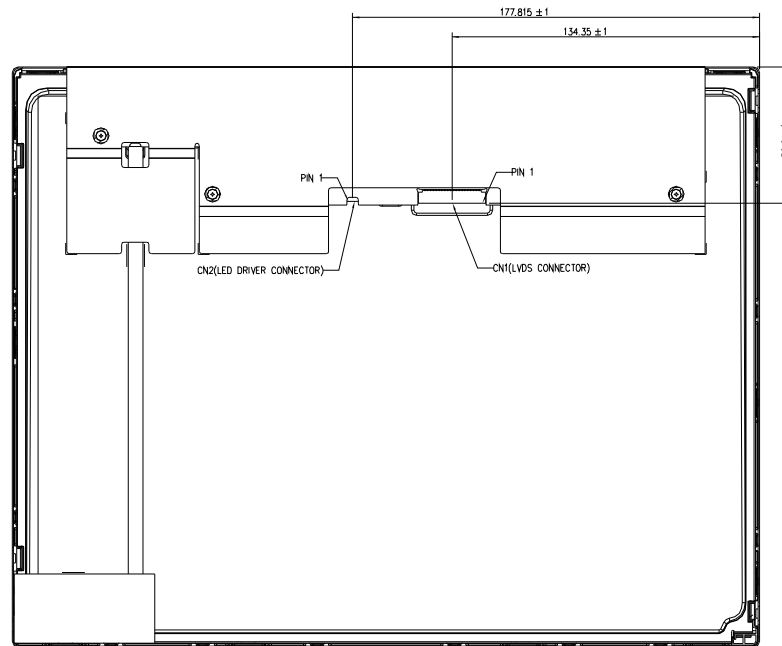
PIN DESCRIPTION FOR CN2	
PIN	SYMBOL
1	VI
2	VOND
3	EN
4	DIMMING
5	NC

- NOTES:
1. DISPLAY TYPE: TFT, TRANSMISSIVE, NORMALLY BLACK
 2. OPERATING VOLTAGE: VCC=3.3V (TYP.)
 3. VIEWING DIRECTION: FULL VIEWING ANGLE
 4. DRIVER IC: -
 5. OPERATING TEMP.: -30°C ~ 80°C
 6. STORAGE TEMP.: -40°C ~ 80°C
 7. LED BACKLIGHT: WHITE LED
BUILT-IN BACKLIGHT DRIVER: VI=12.0V
 8. SURFACE LUMINANCE: 500CD/M² (TYP.)
 9. TOP POLARIZER SURFACE TREATMENT: ANTI-GLARE
 10. CONNECTOR TYPE:
CN1: CVILUX CID520D1HR0-NH
CN2: CVILUX CI4205M2HRP-NH
 11. GENERAL TOLERANCE: ±0.5MM
 12. ROHS COMPLIANT

MIT MULTI-INNO TECHNOLOGY CO., LTD.

DRAWN BY:	CAROL	2017.12.06		MODULE P/N:
CHECKED BY:			SCALE : 1/1	MI1500M1T-1
APPROVED BY:			UNIT: mm	DESCRIPTION:
VERSION NO:	01		SHEET NO.: 1/2	TFT MODULE

01	FIRST ISSUE	CAROL	2017.12.06
VER.	REVISED DESCRIPTION	REVISER	DATE



MULTI-INNO TECHNOLOGY CO., LTD.

DRAWN BY:	CAROL	2017.12.06		MODULE P/N:
CHECKED BY:			SCALE : 1/1	MI1500M1T-1
APPROVED BY:			UNIT: mm	DESCRIPTION:
VERSION NO:	01		SHEET NO.: 2/2	TFT MODULE

01	FIRST ISSUE	CAROL	2017.12.06
VER.	REVISED DESCRIPTION	REVISER	DATE