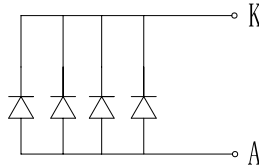


NOTES:

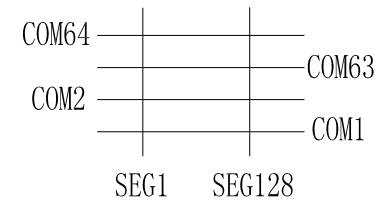
1. DISPLAY TYPE: STN=Y/G POSITIVE, TRANSMISSIVE.
2. DRIVE METHOD: 1/64DUTY, 1/9BIAS, VDD=3.3V, VOP=9.0V.
3. VIEWING DIRECTION: 6 O'CLOCK.
4. IC DRIVER: UC1601s.
5. OPERATING TEMP.: -10°~60°.
6. STORAGE TEMP.: -20°~70°.
7. BACKLIGHT TYPE: Y/G LED, IF=60mA, VF=3.1V±0.2V.
8. GENERAL TOLERANCE: ±0.3.
9. ROHS COMPLIANT.

BACKLIGHT CIRCUIT:



COLOR:4PCS Yellow-Green LED
Vf=3.1V±0.2, If=60mA

FUNCTION TABLE:



26	NC
25	VLCD
24	VBO+
23	VBO-
22	VB1-
21	VB1+
20	TEST4
19	VSS
18	VDD
17	ID
16	BM1
15	BM0
14	D7
13	D6
12	D5
11	D4
10	D3
9	D2
8	D1
7	DO
6	WR1
5	WR0
4	CD
3	RST
2	CS0
1	NC
NO.	SYMBOL



MULTI-INNO TECHNOLOGY CO.,LTD.

DRAWN BY:	RITA	2017.08.04	SCALE : 1/1	MODULE P/N:
CHECKED BY:			UNIT: mm	MI12864BQ-G
APPROVED BY:			DESCRIPTION:	GRAPHIC MODULE
VERSION NO:	01			

01	FIRST ISSUE	RITA	2017.08.04
VER.	REVISED DESCRIPTION	REVISER	DATE