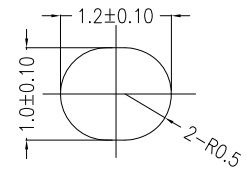
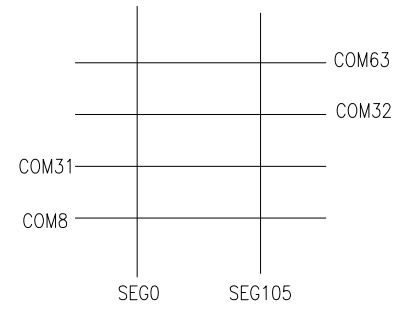


DETAIL A  
(SCALE 10:1)



DETAIL B  
(SCALE 10:1)



PIN ASSIGNMENT	
PIN	SYMBOL
1	NC
2	VG
3	NC
4	NC
5	NC
6	NC
7	XV0
8	VO
9	NC
10	NC
11	NC
12	NC
13	VSS
14	VDD
15	SDA
16	SCL
17	AO
18	RSTB
19	CSB
20	NC

NOTES:

1. DISPLAY TYPE: FSTN, TRANSFLECTIVE, POSITIVE
2. OPERATING VOLTAGE: VDD=3.0V, VOP=9.5V
3. DRIVE METHOD: 1/65DUTY, 1/9BIAS
4. VIEWING DIRECTION: 6:00 O'CLOCK
5. DRIVER IC: ST7567-G4B OR THE EQUIVALENT
6. OPERATING TEMP.: -20°C ~ 70°C
7. STORAGE TEMP.: -30°C ~ 80°C
8. LED BACKLIGHT: 8-CHIP WHITE LED, IF=40mA, VF=6.0V
9. THE SINGLE LAYER AREA OF FPC IS BENDBLE AND THE BENDING RADIUS MUST BE NOT LESS THAN 1.5MM
10. GENERAL TOLERANCE: ±0.3MM
11. ROHS COMPLIANT

**MII** MULTI-INNO TECHNOLOGY CO., LTD.

DRAWN BY:	RITA	2021.08.20		MODULE P/N:
CHECKED BY:			SCALE : 1/1	MI10656A1-G-6
APPROVED BY:			UNIT: mm	DESCRIPTION:
VERSION NO:	01		SHEET NO.: 1/1	GRAPHIC MODULE

01	FIRST ISSUE	RITA	2021.08.20
VER.	REVISED DESCRIPTION	REVISER	DATE