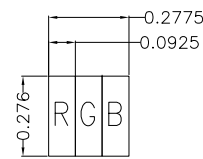


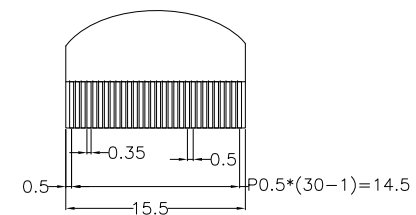
TFT PIN DESCRIPTION			
PIN	SYMBOL	PIN	SYMBOL
1	POL	31	GND
2	STVD	32	G5
3	OEVD	33	G4
4	CKV	34	G3
5	STVU	35	G2
6	GND	36	G1
7	EDGSL	37	G0
8	VCC	38	STHL
9	V9	39	REV
10	VGL	40	GND
11	V2	41	DCLK
12	VGH	42	VCC
13	V6	43	STHR
14	U/D	44	LD
15	VCOM	45	B5
16	GND	46	B4
17	AVDD	47	B3
18	V14	48	B2
19	V11	49	B1
20	V8	50	B0
21	V5	51	R/L
22	V3	52	V1
23	GND	53	V4
24	R5	54	V7
25	R4	55	V10
26	R3	56	V12
27	R2	57	V13
28	R1	58	AVDD
29	R0	59	GND
30	GND	60	VCOM

B/L PIN DESCRIPTION	
PIN	SYMBOL
1	VLED+
2	VLED-

TP PIN DESCRIPTION	
PIN	SYMBOL
1	X1
2	Y1
3	X2
4	Y2



DETAIL A
SCALE 100:1



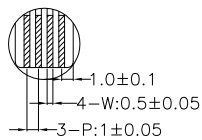
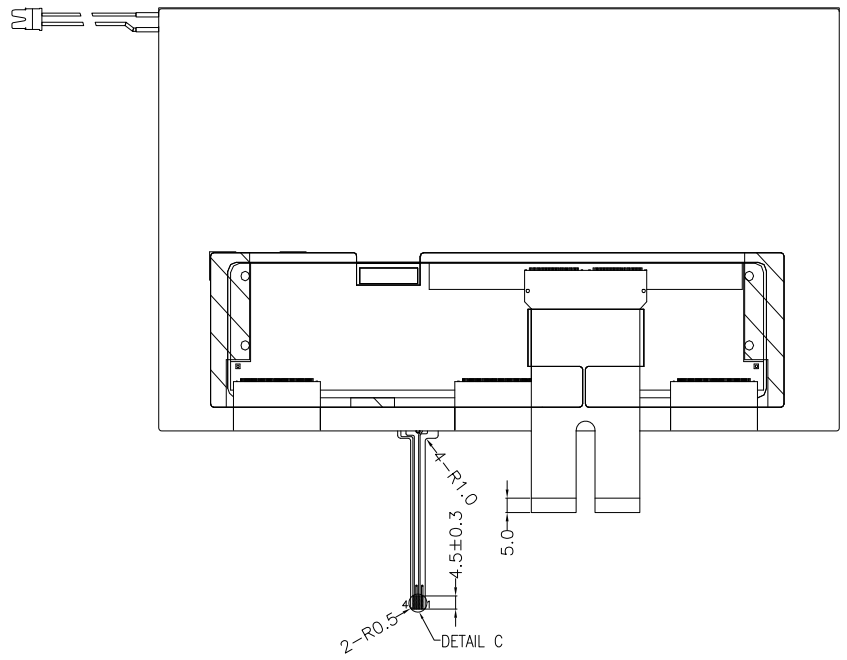
DETAIL B
SCALE 4:1

- NOTES:
1. DISPLAY TYPE: TFT, TRANSMISSIVE, NORMALLY WHITE.
 2. OPERATING VOLTAGE: VCC=3.3V.
 3. VIEWING DIRECTION: 12 O'CLOCK.
 4. DRIVER IC: TBD.
 5. OPERATING TEMP.: -20°C ~ 70°C.
 6. STORAGE TEMP.: -30°C ~ 80°C.
 7. LED BACKLIGHT: 30-CHIP WHITE LED, If=200mA, Vf=9.3V.
 8. TOP POLARIZER SURFACE TREATMENT: ANTI-GLARE.
 9. SURFACE LUMINANCE: 270CD/M²(TYP) WITH RTP.
 10. TFT FPC CONNECTOR TO P-TWO "AF 730L-A2G11".
 11. LIGHT BAR CONNECTOR FOR BACKLIGHT TO BE JST "BHSR-02VS-1".
 12. THE BENDING RADIUS OF FPC SHOULD BE LARGER THAN 0.6R.
 13. GENERAL TOLERANCE: ±0.3MM.
 14. ROHS COMPLIANT.

MIT MULTI-INNO TECHNOLOGY CO.,LTD.

DRAWN BY:	CAROL	2020.11.09		MODULE P/N:
CHECKED BY:			SCALE : 1/1	M1020BT-3RP
APPROVED BY:			UNIT: mm	DESCRIPTION:
VER.	01	FIRST ISSUE	SHEET NO.: 1/2	TFT + RTP MODULE

01	FIRST ISSUE	CAROL	2020.11.09
VER.	REVISED DESCRIPTION	REVISER	DATE



DETAIL B
SCALE 4:1



MULTI-INNO TECHNOLOGY CO.,LTD.

DRAWN BY:	CAROL	2020.11.09		MODULE P/N:
CHECKED BY:			SCALE : 1/1	MI1020BT-3RP
APPROVED BY:			UNIT: mm	DESCRIPTION:
VERSION NO:	01		SHEET NO.: 2/2	TFT + RTP MODULE

01	FIRST ISSUE	CAROL	2020.11.09
VER.	REVISED DESCRIPTION	REVISER	DATE