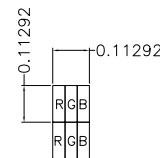


PIN ASSIGNMENT (HDMI INPUT)	
PIN	SYMBOL
1	TMDS DATA 2+
2	TMDS DATA 2 SHIELD
3	TMDS DATA 2-
4	TMDS DATA 1+
5	TMDS DATA 1 SHIELD
6	TMDS DATA 1-
7	TMDS DATA 0+
8	TMDS DATA 0 SHIELD
9	TMDS DATA 0-
10	TMDS CLOCK+
11	TMDS CLOCK SHIELD
12	TMDS CLOCK-
13	CEC
14	RESERVED(N.C. ON DEVICE)
15	SCL
16	SDA
17	DDC/CEC GROUND
18	+5V POWER
19	HOT PLUG DETECT

PIN ASSIGNMENT FOR CON2 (USB INPUT)	
PIN	SYMBOL
1	VBUS
2	D-
3	D+
4	NC
5	GND

PIN ASSIGNMENT FOR CON3 (PWM INPUT)	
PIN	SYMBOL
1	PWM
2	GND



PIXEL DETAILS

NOTES FOR TFT:

1. DISPLAY TYPE: IPS TFT, TRANSMISSIVE, NORMALLY BLACK.
2. POWER SUPPLY: 5V INPUT.
3. VIEWING DIRECTION: FULL VIEWING ANGLE.
4. IC DRIVER: LT8916B.
5. BACKLIGHT: WHITE LED.
6. TOP POLARIZER SURFACE TREATMENT: ANTI-GLARE.

NOTES FOR CTP:

1. 10.1 INCH PROJECTIVE CAPACITIVE TOUCH PANEL.
2. OPERATING VOLTAGE: VCC=5.0V.
3. COVER GLASS + SENSOR GLASS +FPCA.
4. IC DRIVER: ILI2511(TX:29*RX:19).
5. INTERFACE: USB.
6. MULTI FINGER: UP TO 5.
7. HARDNESS OF COVER SURFACE: 6H.

NOTES FOR OTHERS:

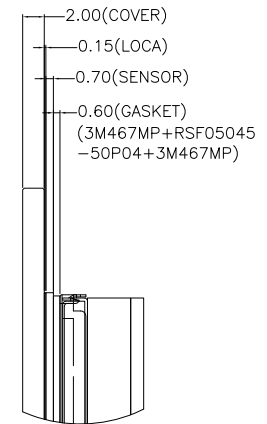
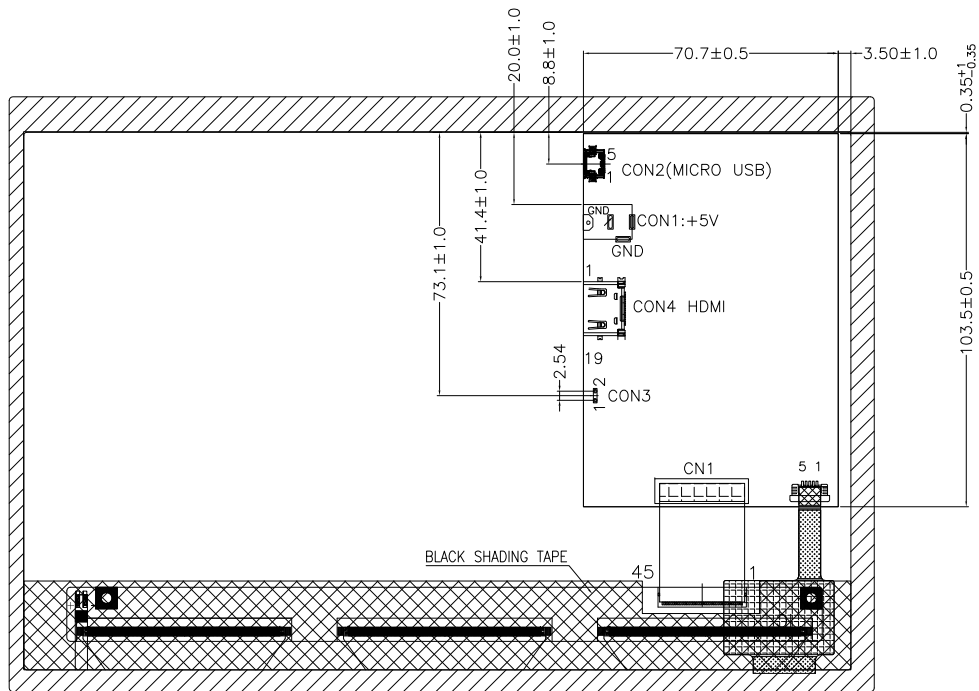
1. OPERATING TEMP.: -20°C ~ 70°C.
2. STORAGE TEMP.: -30°C ~ 80°C.
3. SURFACE LUMINANCE: 250CD/M²(TYP.) WITH CTP.
4. GENERAL TOLERANCE: ±0.3MM.
5. ROHS COMPLIANT.



MULTI-INNO TECHNOLOGY CO.,LTD.

DRAWN BY:	CAROL	2021.01.14	SCALE : 1/1	MODULE P/N:	MI1010ART-1CP-HB
CHECKED BY:			UNIT: mm	DESCRIPTION:	TFT + CTP + HDMI PCBA MODULE
APPROVED BY:			SHEET NO.: 1/2		

01	FIRST ISSUE	CAROL	2021.01.14
VER.	REVISED DESCRIPTION	REVISER	DATE



DETAIL A
SCALE 4:1

LENS BENDING
DIMENSION CONTROL
STANDARDS



TOLERANCE: $D \leq 3\% \cdot L$



MULTI-INNO TECHNOLOGY CO.,LTD.

DRAWN BY:	CAROL 2021.01.14		MODULE P/N:
CHECKED BY:		SCALE : 1/1	M11010ART-1CP-HB
APPROVED BY:		UNIT: mm	DESCRIPTION:
VERSION NO:	01	SHEET NO.: 2/2	TFT + CTP + HDMI PCBA MODULE

01	FIRST ISSUE	CAROL	2021.01.14
VER.	REVISED DESCRIPTION	REVISER	DATE