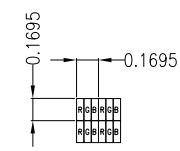


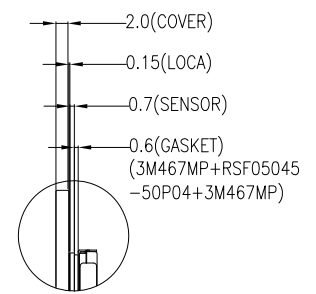
PIN ASSIGNMENT FOR CN1 (HDMI INPUT)	
PIN	SYMBOL
1	TMDS DATA 2+
2	TMDS DATA 2 SHIELD
3	TMDS DATA 2-
4	TMDS DATA 1+
5	TMDS DATA 1 SHIELD
6	TMDS DATA 1-
7	TMDS DATA 0+
8	TMDS DATA 0 SHIELD
9	TMDS DATA 0-
10	TMDS CLOCK+
11	TMDS CLOCK SHIELD
12	TMDS CLOCK-
13	CEC
14	RESERVED(N.C. ON DEVICE)
15	SCL
16	SDA
17	DDC/CEC GROUND
18	+5V POWER
19	HOT PLUG DETECT

PIN ASSIGNMENT FOR CN2 (TYPE-C USB INPUT)			
PIN	SYMBOL	PIN	SYMBOL
A1	GND	B12	GND
A4	VBUS	B9	VBUS
A5	NC	B8	NC
A6	D+	B7	D-
A7	D-	B6	D+
A8	NC	B5	NC
A9	VBUS	B4	VBUS
A12	GND	B1	GND

PIN ASSIGNMENT FOR CN3 (POWER SUPPLY AND BACKLIGHT BRIGHTNESS ADJUSTING)	
PIN	SYMBOL
1	VCC(+12V)
2	GND
3	GND
4	BL_PWM
5	BL_EN



DETAIL A (SCALE 40:1)



DETAIL B (SCALE 2:1)

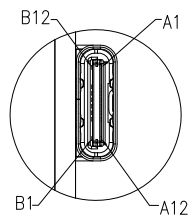
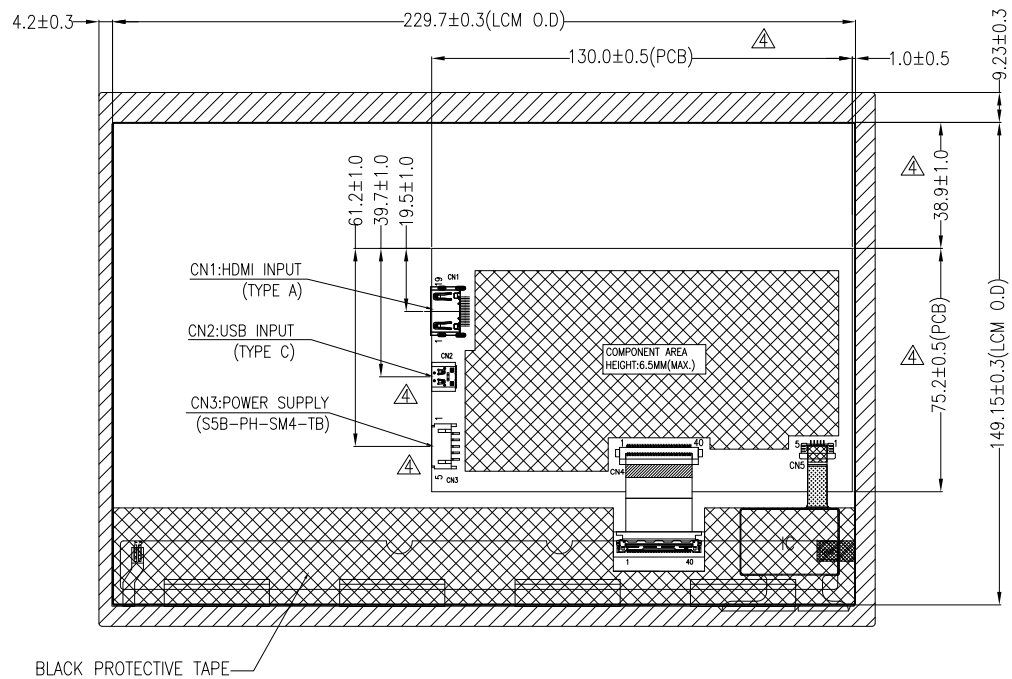
PRINT BLACK C ON THE REAR OF COVER

- NOTES FOR TFT:
1. DISPLAY TYPE: TFT, TRANSMISSIVE, NORMALLY BLACK
 2. POWER SUPPLY(CN3): 12V(TYP.)
 3. VIEWING DIRECTION: FULL VIEWING ANGLE
 4. DRIVER IC: RTD266H
 5. INTERFACE: HDMI AND USB INPUT
 6. BACKLIGHT: WHITE LED.
 7. TOP POLARIZER SURFACE TREATMENT: ANTI-GLARE

- NOTES FOR CTP:
1. 10.1 INCH PROJECTIVE CAPACITIVE TOUCH PANEL
 2. OPERATING VOLTAGE: VCC=5.0V
 3. COVER GLASS + SENSOR GLASS +FPCA
 4. IC DRIVER: ILI2511(TX:29*RX:19)
 5. INTERFACE: USB INPUT
 6. MULTI FINGER: UP TO 5
 7. HARDNESS OF COVER SURFACE: 6H

- NOTES FOR OTHERS:
1. OPERATING TEMP.: -20°C ~ 70°C
 2. STORAGE TEMP.: -30°C ~ 80°C
 3. SURFACE LUMINANCE: 510CD/M²(TYP.) WITH CTP
 4. GENERAL TOLERANCE: ±0.3MM
 5. ROHS COMPLIANT

04	OPTIMIZE THE HDMI BOARD DESIGN,DELETE REDUNDANT FUNCTION	JACK	2021.09.15	MULTI-INNO TECHNOLOGY CO., LTD.	DRAWN BY:	CAROL	2019.11.04	SCALE : 1/1 UNIT: mm SHEET NO.: 1/2	MODULE P/N:	MI1010AAT-6CP1-HB
03	CORRECT CN4 CONNECTOR AND FFC.	CAROL	2020.05.19		CHECKED BY:				DESCRIPTION:	TFT + CTP + PCBA MODULE
02	ADD HDMI,USB,+12V RESERVED INTERFACE LOCATION.	CAROL	2019.11.19		APPROVED BY:					
01	FIRST ISSUE	CAROL	2019.11.04		VERSION NO:	04				
VER.	REVISED DESCRIPTION	REVISOR	DATE							



DETAIL C
(SCALE 4:1)

LENS BENDING
DIMENSION CONTROL
STANDARDS



TOLERANCE: $D \leq 3\% \cdot L$



MULTI-INNO TECHNOLOGY CO., LTD.

04	OPTIMIZE THE HDMI BOARD DESIGN,DELETE REDUNDANT FUNCTION	JACK	2021.09.15	DRAWN BY:	CAROL	2019.11.04		MODULE P/N:	MI1010AAT-6CP1-HB
03	CORRECT CN4 CONNECTOR AND FFC.	CAROL	2020.05.19						
02	ADD HDMI,USB,+12V RESERVED INTERFACE LOCATION.	CAROL	2019.11.19	CHECKED BY:			SCALE : 1/1		
01	FIRST ISSUE	CAROL	2019.11.04	APPROVED BY:			UNIT: mm	DESCRIPTION:	
VER.	REVISED DESCRIPTION	REVISER	DATE	VERSION NO:	04		SHEET NO.: 2/2	TFT + CTP + PCBA MODULE	