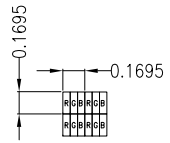


PIN ASSIGNMENT FOR CN1 (HDMI INPUT)	
PIN	SYMBOL
1	TMDS DATA 2+
2	TMDS DATA 2 SHIELD
3	TMDS DATA 2-
4	TMDS DATA 1+
5	TMDS DATA 1 SHIELD
6	TMDS DATA 1-
7	TMDS DATA 0+
8	TMDS DATA 0 SHIELD
9	TMDS DATA 0-
10	TMDS CLOCK+
11	TMDS CLOCK SHIELD
12	TMDS CLOCK-
13	CEC
14	RESERVED(N.C. ON DEVICE)
15	SCL
16	SDA
17	DDC/CEC GROUND
18	+5V POWER
19	HOT PLUG DETECT

PIN ASSIGNMENT FOR CN3 (POWER SUPPLY AND BACKLIGHT BRIGHTNESS ADJUSTING)	
PIN	SYMBOL
1	VCC(+12V)
2	GND
3	GND
4	BL_PWM
5	BL_EN

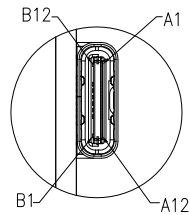
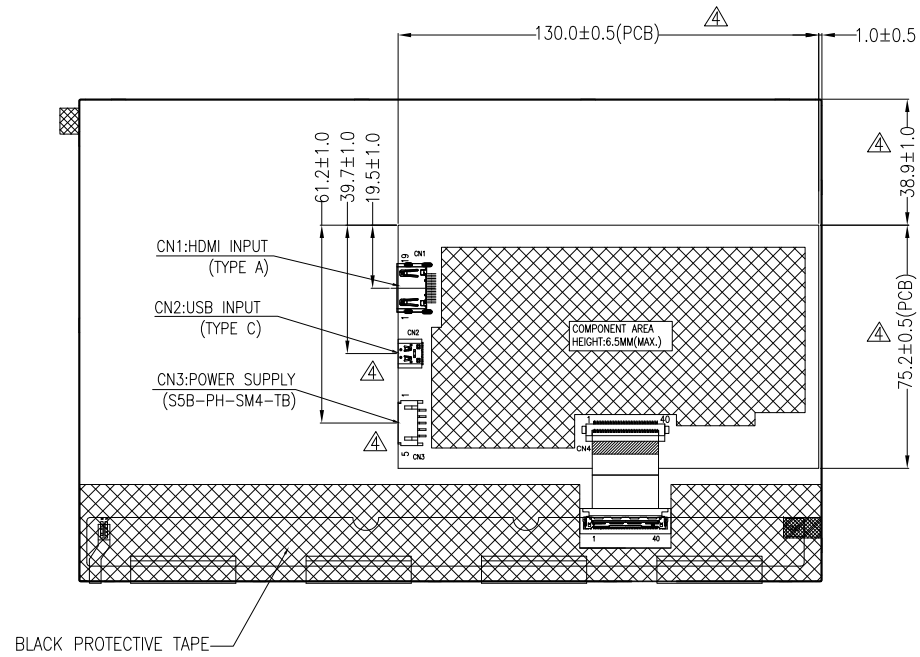


DETAIL A
SCALE 40:1

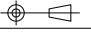
- NOTES:
1. DISPLAY TYPE: TFT, TRANSMISSIVE, NORMALLY BLACK.
 2. POWER SUPPLY(CN3): 12V(TYP.).
 3. VIEWING DIRECTION: FULL VIEWING ANGLE.
 4. DRIVER IC: RTD2660H.
 5. OPERATING TEMP.: -20°C ~ 70°C.
 6. STORAGE TEMP.: -30°C ~ 80°C.
 7. INTERFACE: HDMI.
 8. BACKLIGHT: WHITE LED.
 9. SURFACE LUMINANCE: 600CD/M²(TYP.).
 10. TOP POLARIZER SURFACE TREATMENT: ANTI-GLARE.
 11. GENERAL TOLERANCE: ±0.3MM.
 12. ROHS COMPLIANT.



04	OPTIMIZE THE HDMI BOARD DESIGN,DELETE REDUNDANT FUNCTION	CAROL	2021.11.29	DRAWN BY: CAROL 2019.11.04		MODULE P/N: MI1010AAT-6-HB
03	CORRECT CN4 CONNECTOR AND FFC.	CAROL	2020.05.19			
02	ADD HDMI,USB,+12V RESERVED INTERFACE LOCATION.	CAROL	2019.11.19			
01	FIRST ISSUE	CAROL	2019.11.04	CHECKED BY:	SCALE : 1/1	DESCRIPTION: TFT + PCBA MODULE
VER.	REVISED DESCRIPTION	REVISOR	DATE	APPROVED BY:	UNIT: mm	
				VERSION NO: 04	SHEET NO.: 1/2	



DETAIL B
(SCALE 4:1)

04	OPTIMIZE THE HDMI BOARD DESIGN,DELETE REDUNDANT FUNCTION	CAROL	2021.11.29	DRAWN BY: CAROL 2019.11.04		MODULE P/N: MI1010AAT-6-HB
03	CORRECT CN4 CONNECTOR AND FFC.	CAROL	2020.05.19			
02	ADD HDMI,USB,+12V RESERVED INTERFACE LOCATION.	CAROL	2019.11.19			
01	FIRST ISSUE	CAROL	2019.11.04	CHECKED BY:	SCALE : 1/1	DESCRIPTION: TFT + PCBA MODULE
VER.	REVISED DESCRIPTION	REVISOR	DATE	APPROVED BY:	UNIT: mm	
				VERSION NO: 04	SHEET NO.: 2/2	