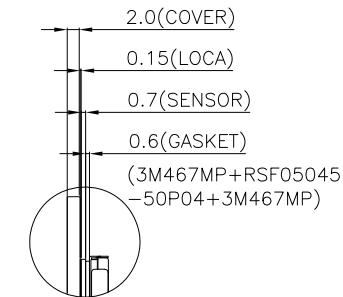
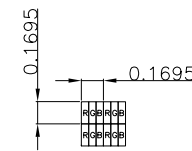


PIN ASSIGNMENT FOR CN1 (HDMI INPUT)	
PIN	SYMBOL
1	TMDS DATA 2+
2	TMDS DATA 2 SHIELD
3	TMDS DATA 2-
4	TMDS DATA 1+
5	TMDS DATA 1 SHIELD
6	TMDS DATA 1-
7	TMDS DATA 0+
8	TMDS DATA 0 SHIELD
9	TMDS DATA 0-
10	TMDS CLOCK+
11	TMDS CLOCK SHIELD
12	TMDS CLOCK-
13	CEC
14	RESERVED(N.C. ON DEVICE)
15	SCL
16	SDA
17	DDC/CEC GROUND
18	+5V POWER
19	HOT PLUG DETECT

PIN ASSIGNMENT FOR CN2 (TYPE-C USB INPUT)			
PIN	SYMBOL	PIN	SYMBOL
A1	GND	B12	GND
A4	VBUS	B9	VBUS
A5	NC	B8	NC
A6	D+	B7	D-
A7	D-	B6	D+
A8	NC	B5	NC
A9	VBUS	B4	VBUS
A12	GND	B1	GND

PIN ASSIGNMENT FOR CN3 (POWER SUPPLY AND BACKLIGHT BRIGHTNESS ADJUSTING)	
PIN	SYMBOL
1	VCC(+12V)
2	GND
3	GND
4	BL_PWM
5	BL_EN



NOTES FOR TFT:

1. DISPLAY TYPE: TFT, TRANSMISSIVE, NORMALLY BLACK.
2. POWER SUPPLY(CN3): 12V(TYP.).
3. VIEWING DIRECTION: FULL VIEWING ANGLE.
4. DRIVER IC: RTD2660H.
5. INTERFACE: HDMI INPUT.
6. BACKLIGHT: WHITE LED.
7. TOP POLARIZER SURFACE TREATMENT: ANTI-GLARE.

NOTES FOR CTP:

1. 10.1 INCH PROJECTIVE CAPACITIVE TOUCH PANEL.
2. OPERATING VOLTAGE: VCC=5.0V.
3. COVER GLASS + SENSOR GLASS +FPCA.
4. IC DRIVER: ILI2511(TX:29*RX:19).
5. INTERFACE: USB INPUT.
6. MULTI FINGER: UP TO 5.
7. HARDNESS OF COVER SURFACE: 6H.

NOTES FOR OTHERS:

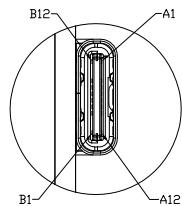
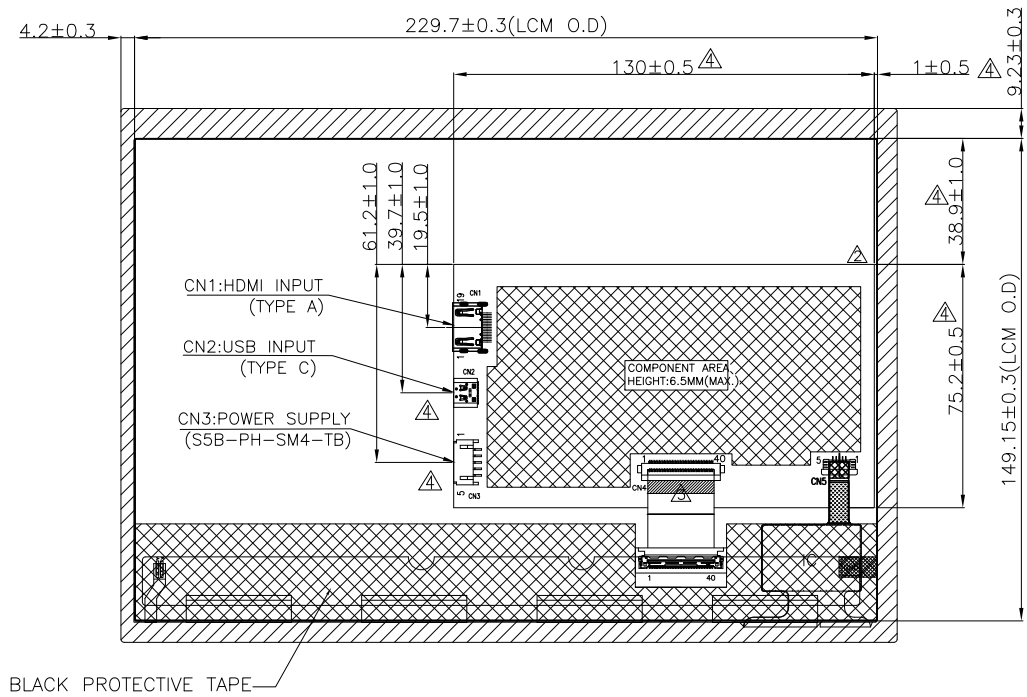
1. OPERATING TEMP.: -20°C ~ 70°C.
2. STORAGE TEMP.: -30°C ~ 80°C.
3. SURFACE LUMINANCE: 850CD/M²(TYP.) WITH CTP.
4. GENERAL TOLERANCE: ±0.3MM.
5. ROHS COMPLIANT.

DETAIL A
SCALE 40:1

DETAIL B
SCALE 2:1

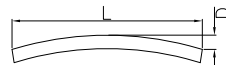
MULTI-INNO TECHNOLOGY CO., LTD.

04	OPTIMIZE THE HDMI BOARD DESIGN,DELETE REDUNDANT FUNCTION.	RITA	2020.09.15	DRAWN BY:	CAROL	2019.11.01		MODULE P/N:	
03	CORRECT THE CONNECTION METHOD OF TFT AND PCBA.	RITA	2020.11.25	CHECKED BY:			SCALE : 1/1	MI1010AAT-4CP1-HB	
02	ADD HDMI, USB, +12V RESERVED INTERFACE LOCATION.	CAROL	2019.11.19	APPROVED BY:			UNIT: mm	DESCRIPTION:	
01	FIRST ISSUE	CAROL	2019.11.01	VERSION NO:	04		SHEET NO.: 1/2	TFT + CTP + PCBA MODULE	
VER.	REVISED DESCRIPTION	REVISER	DATE						



DETAIL C
(SCALE 4:1)

LENS BENDING
DIMENSION CONTROL
STANDARDS



TOLERANCE: $D \leq 3\% \cdot L$



MULTI-INNO TECHNOLOGY CO., LTD.

04	OPTIMIZE THE HDMI BOARD DESIGN,DELETE REDUNDANT FUNCTION.	RITA	2020.09.15	DRAWN BY:	CAROL	2019.11.01		MODULE P/N:
03	CORRECT THE CONNECTION METHOD OF TFT AND PCBA.	RITA	2020.11.25	CHECKED BY:				MI1010AAT-4CP1-HB
02	ADD HDMI, USB, +12V RESERVED INTERFACE LOCATION.	CAROL	2019.11.19	APPROVED BY:			SCALE : 1/1	DESCRIPTION:
01	FIRST ISSUE	CAROL	2019.11.01	VERSION NO:	04		UNIT: mm	TFT + CTP + PCBA MODULE
VER.	REVISED DESCRIPTION	REVISER	DATE				SHEET NO.: 2/2	