


- NOTES FOR TFT:
1. DISPLAY TYPE: TFT, TRANSMISSIVE, NORMALLY BLACK
 2. OPERATING VOLTAGE: VDD=3.3V
 3. VIEWING DIRECTION: FULL VIEWING ANGLE
 4. IC DRIVER: HX8245 + HX8695
 5. BACKLIGHT: 36-CHIP WHITE LED, If=225mA, Vf=10.8V~13.6V
 6. TOP POLARIZER SURFACE TREATMENT: GLARE
- NOTES FOR OTHERS:
1. OPERATING TEMP.: -20°C ~ 70°C
 2. STORAGE TEMP.: -30°C ~ 80°C
 3. SURFACE LUMINANCE: 510CD/M²(TYP.) WITH CTP
 4. GENERAL TOLERANCE: ±0.3MM
 5. ROHS COMPLIANT

- NOTES FOR CTP:
1. 10.1 INCH PROJECTIVE CAPACITIVE TOUCH PANEL
 2. OPERATING VOLTAGE: VCC=5.0V
 3. COVER GLASS + SENSOR GLASS +FPCA
 4. IC DRIVER: ILI2511(TX:29*RX:19)
 5. INTERFACE: USB
 6. MULTI FINGER: UP TO 5
 7. HARDNESS OF COVER SURFACE: 6H

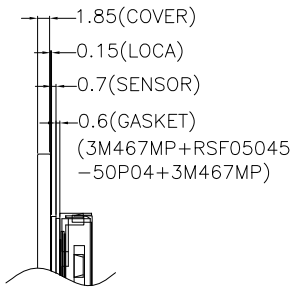
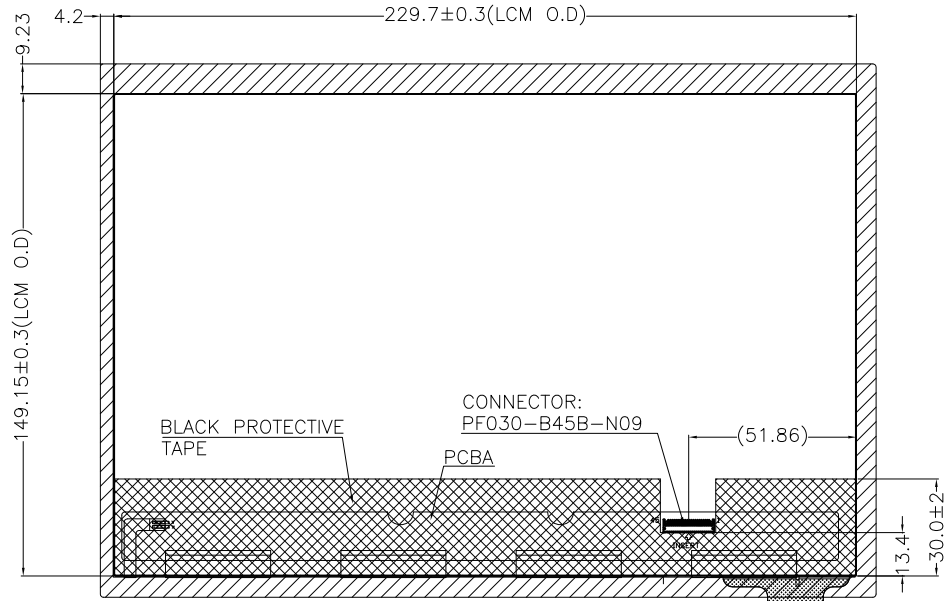
TFT PIN DESCRIPTION	
PIN	SYMBOL
1	GND1
2	ID_CHK
3	NC
4	VDD(3.3V)
5	VDD(3.3V)
6	VDD(3.3V)
7	VDD(3.3V)
8	VDD(3.3)
9	WPN
10	SCL
11	SDA
12	GND2
13	GND3
14	GND4
15	RXIN3N
16	RXIN3P
17	GND5
18	LVDS_RX_N
19	LVDS_RX_P
20	GND6
21	RXIN2N
22	RXIN2P
23	GND7
24	RXIN1N
25	RXIN1P
26	GND8
27	RXIN0N
28	RXIN0P
29	GND9
30	GND10
31	NC
32	LEDK
33	LEDK
34	LEDK
35	LEDK
36	NC
37	NC
38	NC
39	LEDA
40	LEDA
41	LEDA
42	LEDA
43	LEDA
44	NC
45	GND11

CTP PIN DESCRIPTION	
PIN	SYMBOL
1	GND
2	NC
3	D+
4	D-
5	VBUS

 MULTI-INNO TECHNOLOGY CO., LTD.

DRAWN BY:	CAROL 2019.09.27		MODULE P/N:
CHECKED BY:		SCALE : 1/1	M1010AAT-3CP
APPROVED BY:		UNIT: mm	DESCRIPTION:
VERSION NO:	01	SHEET NO.: 1/2	TFT + CTP MODULE

01	FIRST ISSUE	CAROL	2019.09.27
VER.	REVISED DESCRIPTION	REVISOR	DATE

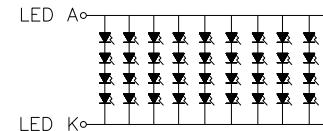
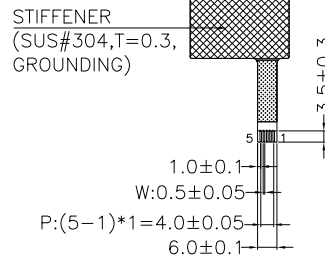


DETAIL B
SCALE 2:1

LENS BENDING
DIMENSION CONTROL
STANDARDS

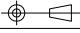


TOLERANCE: $D \leq 3\% \cdot L$



BACKLIGHT CIRCUIT DIAGRAM

 MULTI-INNO TECHNOLOGY CO., LTD.

DRAWN BY:	CAROL	2019.09.27		MODULE P/N:
CHECKED BY:			SCALE : 1/1	MI1010AAT-3CP
APPROVED BY:			UNIT: mm	DESCRIPTION:
VERSION NO:	01		SHEET NO.: 2/2	TFT + CTP MODULE

01	FIRST ISSUE	CAROL	2019.09.27
VER.	REVISED DESCRIPTION	REVISOR	DATE