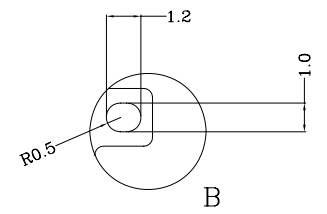
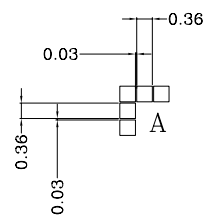


Pin Description	
Pin No	Pin Name
1	V4
2	V3
3	V2
4	V1
5	V0
6	VR
7	C2-
8	C2+
9	C1-
10	C1+
11	C3+
12	VDUT
13	VSS
14	SI
15	SCL
16	VDD
17	A0
18	CS
19	RESET
20	NC

DETAIL A:
SCALE 6:1


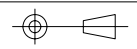
DETAIL B:
SCALE 4:1



NOTES:

1. DISPLAY TYPE: FSTN.
2. POLARIZER MODE: TRANSFLECTIVE, POSITIVE.
3. OPERATING VOLTAGE: VOP=7.0V, VDD=3.0V.
4. DRIVE METHOD: 1/33DUTY, 1/6BIAS.
5. VIEWING DIRECTION: 6 O'CLOCK.
6. IC DRIVER: ST7565R.
7. OPERATING TEMP: -20°C ~ 70°C.
8. STORAGE TEMP: -30°C ~ 80°C.
9. LED BACKLIGHT: WITHOUT BACKLIGHT.
10. INTERFACE: 4 LINE SERIAL INTERFACE.
11. GENERAL TOLERANCE: ±0.3.
12. RoHS COMPLIANT.

VER.	REVISED DESCRIPTION	DATE
02	Update Operating Temp. and Storage Temp.	2012.07.24
01	First Issue	2008.11.04

 MULTI-INNO TECHNOLOGY CO.,LTD.			
DRAWN BY:	CAROL 2012.07.24	SCALE : 1/1	MODULE P/N:
CHECKED BY:		UNIT:	MI10032A-G
APPROVED BY:		mm	DESCRIPTION:
VERSION NO:	02		GRAPHIC MODULE