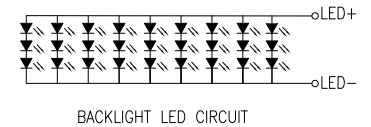
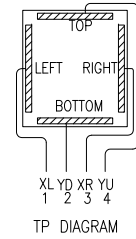
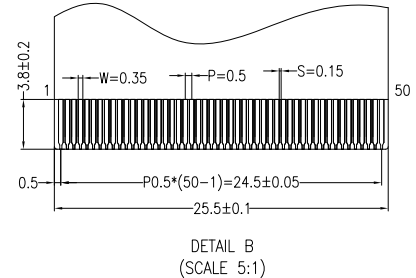
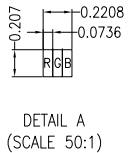
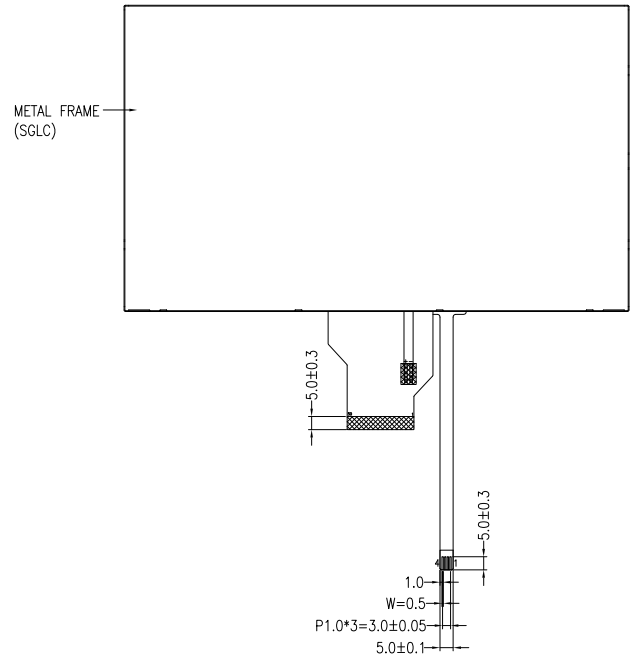
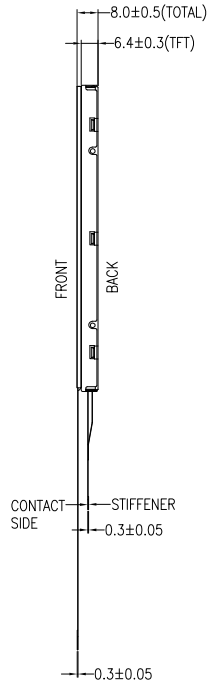
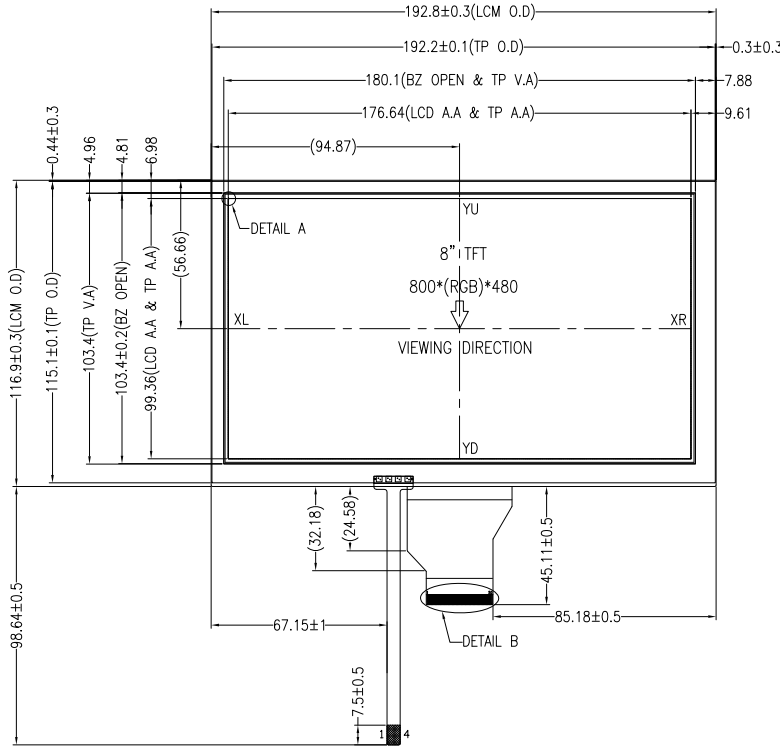


PIN DESCRIPTION FOR RTP		PIN DESCRIPTION FOR TFT	
PIN	SYMBOL	PIN	SYMBOL
1	XL	1	LED+
2	YD	2	LED+
3	XR	3	LED-
4	YU	4	LED-
		5	GND
		6	VCOM
		7	DVDD
		8	MODE
		9	DE
		10	VS
		11	HS
		12	B7
		13	B6
		14	B5
		15	B4
		16	B3
		17	B2
		18	B1
		19	B0
		20	G7
		21	G6
		22	G5
		23	G4
		24	G3
		25	G2
		26	G1
		27	G0
		28	R7
		29	R6
		30	R5
		31	R4
		32	R3
		33	R2
		34	R1
		35	R0
		36	GND
		37	DCLK
		38	GND
		39	L/R
		40	U/D
		41	VGH
		42	VGL
		43	AVDD
		44	RESET
		45	NC
		46	VCOM
		47	DITHB
		48	GND
		49	NC
		50	NC



NOTES:

1. DISPLAY TYPE: TFT, TRANSMISSIVE, NORMALLY WHITE
2. OPERATING VOLTAGE: DVDD=3.3V (TYP.)
3. VIEWING DIRECTION: 12 O'CLOCK
4. DRIVER IC: NT52001+NT39419B
5. OPERATING TEMP.: -20°C ~ 70°C
6. STORAGE TEMP.: -30°C ~ 80°C
7. LED BACKLIGHT: 27-CHIP WHITE LED, IF=180mA, Vf=9.6V
8. SURFACE LUMINANCE: 350CD/M² (TYP.)
9. TOP POLARIZER SURFACE TREATMENT: ANTI-GLARE
10. THE SINGLE LAYER AREA OF FPC IS BENDABLE AND THE BENDING RADIUS MUST BE NOT LESS THAN 1.5MM
11. GENERAL TOLERANCE: ±0.3MM
12. ROHS COMPLIANT

MIR MULTI-INNO TECHNOLOGY CO., LTD.

DRAWN BY:	RITA	2016.08.31		MODULE P/N:
CHECKED BY:			SCALE : 1/1	MI0800JT-3RP
APPROVED BY:			UNIT: mm	DESCRIPTION:
VERSION NO:	01		SHEET NO: 1/1	TFT + RTP MODULE

01	FIRST ISSUE	RITA	2016.08.31
VER.	REVISED DESCRIPTION	REVISER	DATE