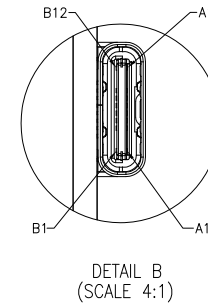
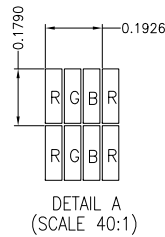


PIN ASSIGNMENT FOR CN4 (HDMI INPUT)	
NO.	SYMBOL
1	TMDS DATA 2+
2	TMDS DATA 2 SHIELD
3	TMDS DATA 2-
4	TMDS DATA 1+
5	TMDS DATA 1 SHIELD
6	TMDS DATA 1-
7	TMDS DATA 0+
8	TMDS DATA 0 SHIELD
9	TMDS DATA 0-
10	TMDS CLOCK+
11	TMDS CLOCK SHIELD
12	TMDS CLOCK-
13	CEC
14	RESERVED(N.C. ON DEVICE)
15	SCL
16	SDA
17	DDC/CEC GROUND
18	+5V POWER
19	HOT PLUG DETECT

PIN ASSIGNMENT FOR CN1 (POWER SUPPLY AND BACKLIGHT BRIGHTNESS ADJUSTING)	
PIN	SYMBOL
1	VCC(+12V)
2	GND
3	GND
4	BL_PWM
5	BL_EN



NOTES:

1. DISPLAY TYPE: TFT, TRANSMISSIVE, NORMALLY WHITE
2. POWER SUPPLY (CN1): 12.0V (TYP.)
3. VIEWING DIRECTION: 12 O'CLOCK
4. DRIVER IC: RTD2660H
5. INTERFACE: HDMI INPUT
6. OPERATING TEMP.: -20°C ~ 70°C
7. STORAGE TEMP.: -30°C ~ 80°C
8. LED BACKLIGHT: WHITE LED, BUILT-IN BACKLIGHT DRIVER
9. SURFACE LUMINANCE: 1000CD/M²(TYP.)
10. TOP POLARIZER SURFACE TREATMENT: ANTI-GLARE
11. GENERAL TOLERANCE: ±0.3MM
12. ROHS COMPLIANT

MULTI-INNO TECHNOLOGY CO., LTD.			
DRAWN BY:	RITA	2019.09.05	MODULE P/N:
CHECKED BY:			MI0700S6T-12-HB
APPROVED BY:			DESCRIPTION:
VERSION NO.:	03		TFT + PCBA MODULE
			SHEET NO.: 1/1

VER.	REVISED DESCRIPTION	REVISER	DATE
03	OPTIMIZE THE HDMI BOARD DESIGN, DELETE REDUNDANT FUNCTION.	CAROL	2022.07.28
02	ADD GASKET. MODIFY MODULE TOTAL THICKNESS.	RITA	2019.10.25
01	FIRST ISSUE	RITA	2019.09.05