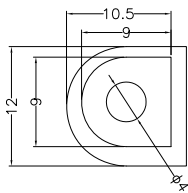
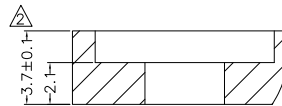


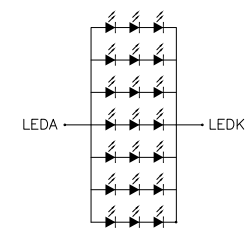
DETAIL A  
(SCALE 40:1)



DETAIL B  
(SCALE 2:1)



DETAIL C  
(SCALE 4:1)



BACKLIGHT CIRCUIT DIAGRAM

NOTE: VCC SUPPLY FOR  
DC CIRCUIT AND BACKLIGHT CIRCUIT.

CN1 PIN ASSIGNMENT	
PIN NO	SYMBOL
1	LR
2	UD
3	VSS
4	VSS
5	VDD
6	VDD
7	PWCTRL
8	LEDCTRL
9	ENB
10	VSYNC
11	HSYNC
12	DCLK
13	VSS
14	R0
15	R1
16	R2
17	R3
18	R4
19	R5
20	R6
21	R7
22	G0
23	G1
24	G2
25	G3
26	G4
27	G5
28	G6
29	G7
30	B0
31	B1
32	B2
33	B3
34	B4
35	B5
36	B6
37	B7
38	/RESET
39	VSS
40	VCC

- NOTES:
1. DISPLAY TYPE: TFT/TRANSMISSIVE/NORMALLY WHITE
  2. OPERATING VOLTAGE: VDD=VLED=3.3V
  3. VIEWING DIRECTION: 6:00 O'CLOCK
  4. DRIVER IC: HX8250-A01+HX8678
  5. OPERATING TEMP.: -20~70°
  6. STORAGE TEMP.: -30~80°
  7. BACKLIGHT: 21-CHIP WHITE LED, IF=140mA, VF=8.4V~10.2V BUILT-IN BACKLIGHT DRIVER
  8. SURFACE LUMINANCE: 700CD/M<sup>2</sup>(TYP.)
  9. TOP POLARIZER SURFACE TREATMENT: GLARE
  10. GENERAL TOLERANCE: ±0.3mm
  11. ROHS COMPLIANT

<b>MULTI-INNO TECHNOLOGY CO.,LTD.</b>			
DRAWN BY: RITA	2020.07.28	SCALE : 1/1	MODULE P/N:
CHECKED BY:		UNIT: mm	MI0570E2T-10
APPROVED BY:			DESCRIPTION: TFT MODULE
VERSION NO: 02			

VER.	REVISED DESCRIPTION	REVISER	DATE
02	ADD METAL FRAME MATERIAL. MODIFY THE THICKNESS OF ASSEMBLY HOLES. MODIFY THE NOTE.	RITA	2020.11.10
01	FIRST ISSUE	RITA	2020.07.28