

NOTES FOR TFT:

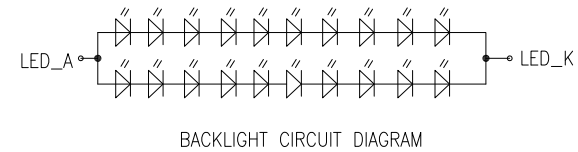
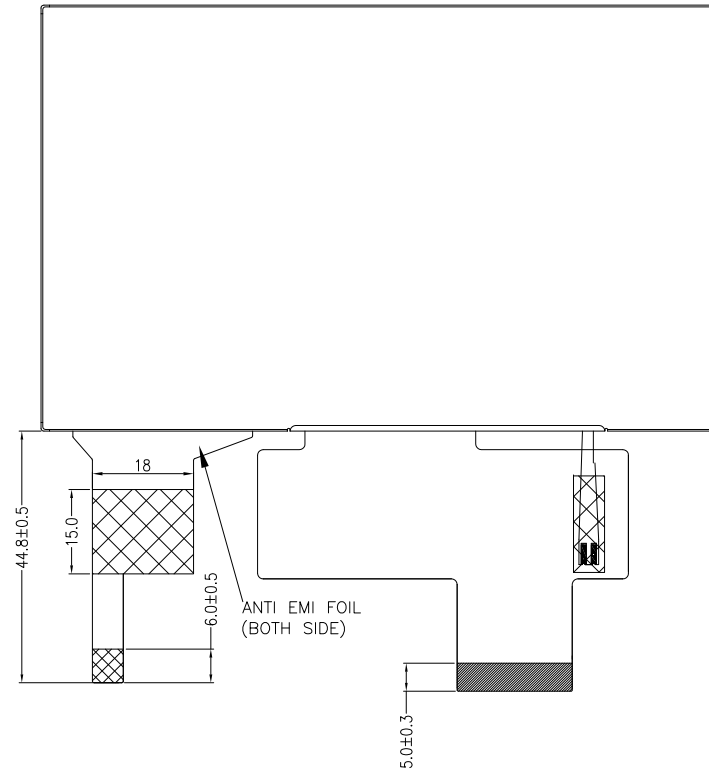
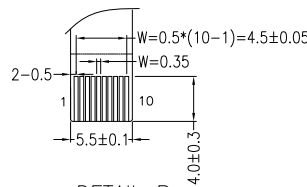
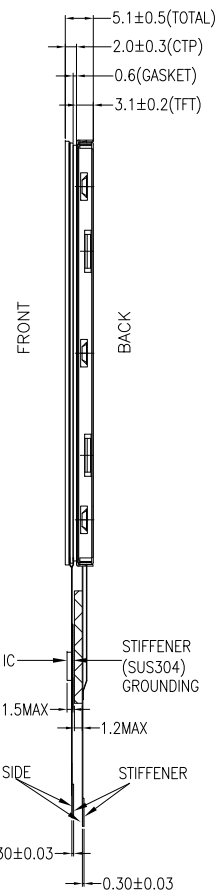
1. DISPLAY TYPE: TFT, TRANSMISSIVE, NORMALLY WHITE.
2. OPERATING VOLTAGE: VDD=3.3V.
3. VIEWING DIRECTION: 12 O'CLOCK.
4. IC DRIVER: HX8664B+HX8264D.
5. OPERATING TEMP: -20°C ~ 70°C.
6. STORAGE TEMP: -30°C ~ 80°C.
7. BACKLIGHT: 20-CHIP WHITE LED, If=40mA, Vf=28V~34V.
8. SURFACE LUMINANCE: 720CD/M²(TYP.) (WITH CTP).
9. TOP POLARIZER SURFACE TREATMENT: ANTI-GLARE.

OTHERS:

1. GENERAL TOLERANCE: ±0.2MM.
2. RoHS COMPLIANT.

NOTES FOR CTP:

1. 5.0" PROJECTIVE CAPACITIVE TOUCH PANEL.
2. OPERATING VOLTAGE: VCC=IOVCC=3.3V.
3. COVER GLASS + SENSOR GLASS + FP.CA.
4. RESOLUTION: 800 X 480 DOTS.
5. IC DRIVER: FT5446 DQS.
6. MULTI FINGER: UP TO 5.
7. HARDNESS OF COVER SURFACE: 7H.
8. FIRMWARE FILE: MI0500CJP-C FIRMWARE V05 20180612.



PIN ASSIGNMENT FOR LCM:	
PIN NO	SYMBOL
1	LED_K
2	LED_A
3	GND
4	VDD
5	R0
6	R1
7	R2
8	R3
9	R4
10	R5
11	R6
12	R7
13	G0
14	G1
15	G2
16	G3
17	G4
18	G5
19	G6
20	G7
21	B0
22	B1
23	B2
24	B3
25	B4
26	B5
27	B6
28	B7
29	GND
30	CLKIN
31	STBYB
32	HSD
33	VSD
34	DEN
35	NC
36	GND
37	NC
38	NC
39	NC
40	NC
PIN ASSIGNMENT FOR CTP:	
PIN NO	SYMBOL
1	VSS
2	VCC
3	SCL
4	NC
5	SDA
6	NC
7	/RST
8	NC
9	/INT
10	VSS

MIT MULTI-INNO TECHNOLOGY CO., LTD.

DRAWN BY:	RITA	2018.09.06	SCALE : 1/1	MODULE P/N:
CHECKED BY:			UNIT:	MI0500PT-18CP1
APPROVED BY:			mm	DESCRIPTION:
VERSION NO:	02			TFT & CTP MODULE

VER.	REVISED DESCRIPTION	REVISER	DATE
02	CORRECT THE MODULE THICKNESS	RITA	2019.05.14
01	FIRST ISSUE	RITA	2018.09.06