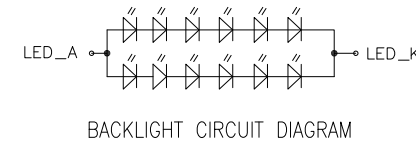
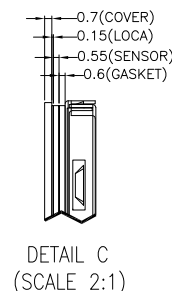
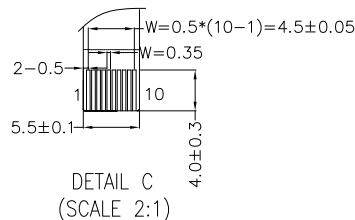
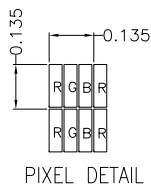
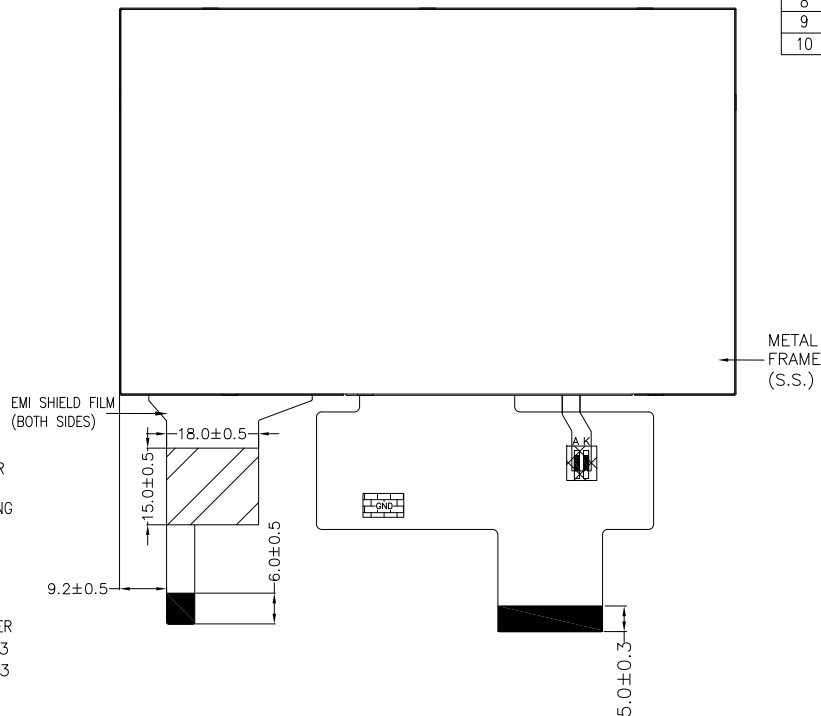
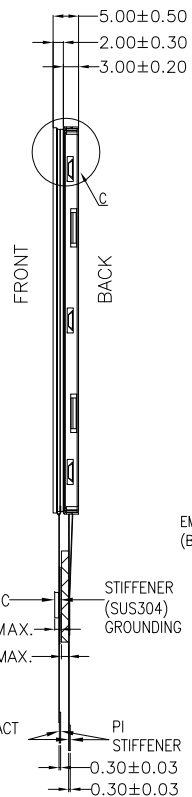
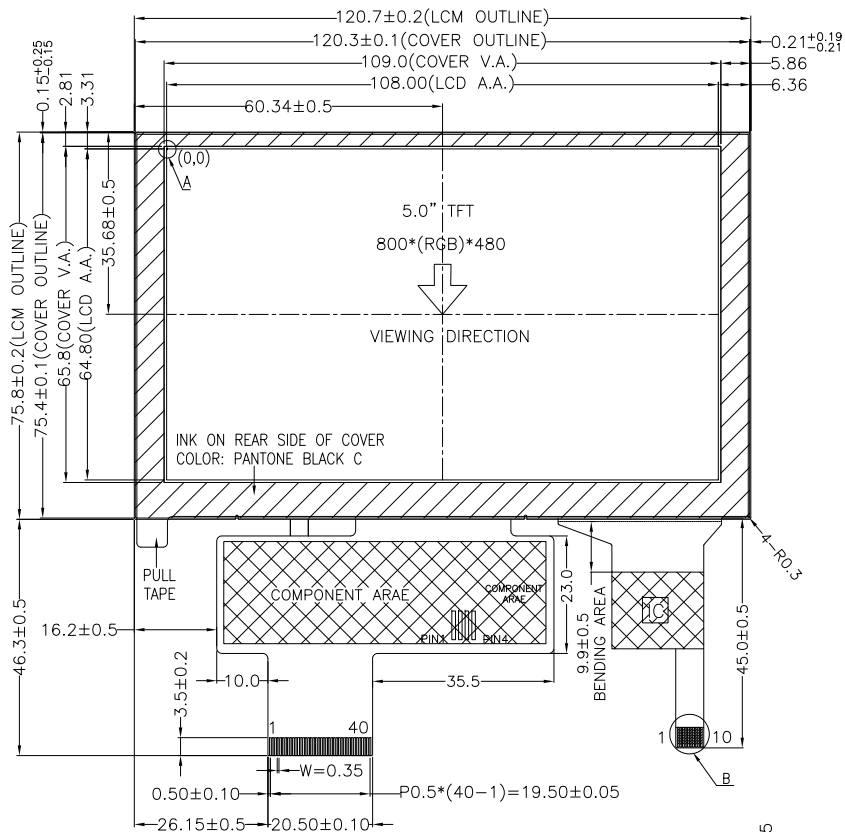


NO MECHANICAL HOUSING TO HOLD THE TFT AND THE TOUCH PANEL ON THIS PRODUCT, SO THE END UNIT'S MECHANICAL DESIGN MUST INCLUDE A HOUSING FOR PREVENTING THE SEPARATION OF THE TFT AND THE TOUCH PANEL.



PIN ASSIGNMENT FOR CTP		PIN ASSIGNMENT FOR LCM	
PIN	SYMBOL	PIN	SYMBOL
1	VSS	1	LED_K
2	VCC	2	LED_A
3	SCL	3	GND
4	NC	4	VDD
5	SDA	5	R0
6	NC	6	R1
7	/RST	7	R2
8	NC	8	R3
9	/INT	9	R4
10	VSS	10	R5
		11	R6
		12	R7
		13	G0
		14	G1
		15	G2
		16	G3
		17	G4
		18	G5
		19	G6
		20	G7
		21	B0
		22	B1
		23	B2
		24	B3
		25	B4
		26	B5
		27	B6
		28	B7
		29	GND
		30	DCLK
		31	DISP
		32	HSYNC
		33	VSYS
		34	DE
		35	NC
		36	GND
		37	NC
		38	NC
		39	NC
		40	NC

NOTES FOR TFT:

1. DISPLAY TYPE: TFT, TRANSMISSIVE, NORMALLY WHITE
2. OPERATING VOLTAGE: VDD=3.3V (TYP.)
3. VIEWING DIRECTION: 12:00 O'CLOCK
4. DRIVER IC: ILI5960 + ILI6122
5. BACKLIGHT: 12-CHIP WHITE LED, If=40mA, Vf=16.2V~20.4V
6. TOP POLARIZER SURFACE TREATMENT: ANTI-GLARE
7. RECOMMEND MATCHING CONNECTOR: HRS FH28-40S-0.5SH OR EQUIVALENT

NOTES FOR OTHERS:

1. OPERATING TEMP.: -20°C ~ 70°C
2. STORAGE TEMP.: -30°C ~ 80°C
3. SURFACE LUMINANCE: 510 CD/M² (TYP.) (WITH CTP)
4. ONLY THE SINGLE LAYER AREA ON FPC IS BENDABLE AND THE MINIMUM BEND RADIUS IS 1.5MM
5. GENERAL TOLERANCE: ±0.3MM
6. ROHS COMPLIANT

NOTES FOR CTP:

1. 5.0 INCH PROJECTIVE CAPACITIVE TOUCH PANEL
2. COVER GLASS + SENSOR GLASS + FPCA
3. OPERATING VOLTAGE: VCC=IOVCC=3.3V
4. DRIVER IC: FT5446-P03
5. INTERFACE: I²C
6. RESOLUTION: 800*480
7. MULTI FINGER: UP TO 5
8. HARDNESS OF COVER SURFACE: ≥7H
9. FIRMWARE FILE: MI0500CJP-C6(FT5446-P03)_FIRMWARE_V0B_20201104_ALL.BIN

MIT MULTI-INNO TECHNOLOGY CO., LTD.

DRAWN BY:	RITA	2023.01.09	SCALE : 1/1	MODULE P/N:
CHECKED BY:			UNIT: mm	MI0500P3T-7CP
APPROVED BY:			DESCRIPTION: TFT + CTP MODULE	
VERSION NO:	01			

01	FIRST ISSUE	RITA	2023.01.09
VER.	REVISED DESCRIPTION	REVISER	DATE