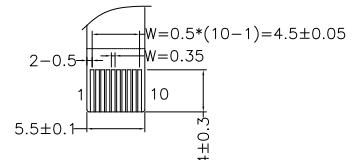
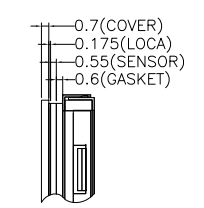


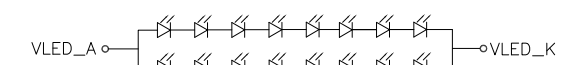
DETAIL A
(SCALE 2:1)



DETAIL B
(SCALE 2:1)



DETAIL C
(SCALE 2:1)



BACKLIGHT CIRCUIT DIAGRAM

| PIN ASSIGNMENT FOR LCM: | | |
|-------------------------|--------|--|
| PIN | SYMBOL | |
| 1 | VLED_K | |
| 2 | VLED_A | |
| 3 | GND | |
| 4 | VDD | |
| 5 | R0 | |
| 6 | R1 | |
| 7 | R2 | |
| 8 | R3 | |
| 9 | R4 | |
| 10 | R5 | |
| 11 | R6 | |
| 12 | R7 | |
| 13 | G0 | |
| 14 | G1 | |
| 15 | G2 | |
| 16 | G3 | |
| 17 | G4 | |
| 18 | G5 | |
| 19 | G6 | |
| 20 | G7 | |
| 21 | B0 | |
| 22 | B1 | |
| 23 | B2 | |
| 24 | B3 | |
| 25 | B4 | |
| 26 | B5 | |
| 27 | B6 | |
| 28 | B7 | |
| PIN ASSIGNMENT FOR CTP: | | |
| PIN | SYMBOL | |
| 29 | GND | |
| 30 | DCLK | |
| 31 | DISP | |
| 32 | HSYNC | |
| 33 | VSYS | |
| 34 | DE | |
| 35 | NC | |
| 36 | GND | |
| 37 | NC | |
| 38 | NC | |
| 39 | NC | |
| 40 | NC | |

- NOTES FOR TFT:
1. DISPLAY TYPE: TFT/TRANSMISSIVE/NORMALLY BLACK
 2. VIEWING DIRECTION: FULL VIEWING ANGLE
 3. OPERATING VOLTAGE: VDD=3.3V
 4. DRIVER IC: HX8264D03+HX8664B
 5. BACKLIGHT: 16-CHIP WHITE LED, IF=40mA, Vf=22.4V~28.0V
 6. TOP POLARIZER SURFACE TREATMENT: ANTI-GLARE

- NOTES FOR CTP:
1. 4.3" PROJECTIVE CAPACITIVE TOUCH PANEL
 2. OPERATING VOLTAGE: VCC=IOVCC=3.3V
 3. COVER GLASS + SENSOR GLASS + FPCC
 4. RESOLUTION: 800 X 480 DOTS
 5. IC DRIVER: FT5446-P03 (SMT); IIC INTERFACE
 6. MULTI-FINGER: UP TO 5
 7. HARDNESS OF COVER SURFACE: 7H
 8. FIRMWARE FILE: MI0430CRP-C11-F(FT5446-P03)_800_480_FIRMWARE_V10_20200611_ALL.BIN

- OTHERS:
1. OPERATING TEMP.: -30°C ~ 85°C
 2. STORAGE TEMP.: -40°C ~ 85°C
 3. SURFACE LUMINANCE: 850CD/M²(TYP.) (WITH CTP)
 4. THE SINGLE LAYER AREA OF FPC IS BENDABLE AND THE BENDING RADIUS MUST BE NOT LESS THAN 1.5MM
 5. GENERAL TOLERANCE: ±0.2mm
 6. ROHS COMPLIANT

Multi-Inno Technology Co., Ltd.

| | | | | | |
|--------------|---------------------|----------|-------------|-------------|------------------|
| DRAWN BY: | RITA | 20211223 | | MODULE P/N: | |
| CHECKED BY: | | | SCALE : 1/1 | | MI0430BFT-2CP |
| APPROVED BY: | | | UNIT: mm | | DESCRIPTION: |
| VER: | REVISED DESCRIPTION | REVISOR | DATE | VERSION NO: | 02 |
| | | | | SHEET NO.: | 1/1 |
| | | | | | TFT + CTP MODULE |

| | | | |
|----|---|------|------------|
| 02 | UPDATE THE OPERATING TEMPERATURE AND STORAGE TEMPERATURE. | RITA | 2022.04.07 |
| 01 | FIRST ISSUE | RITA | 2021.12.23 |