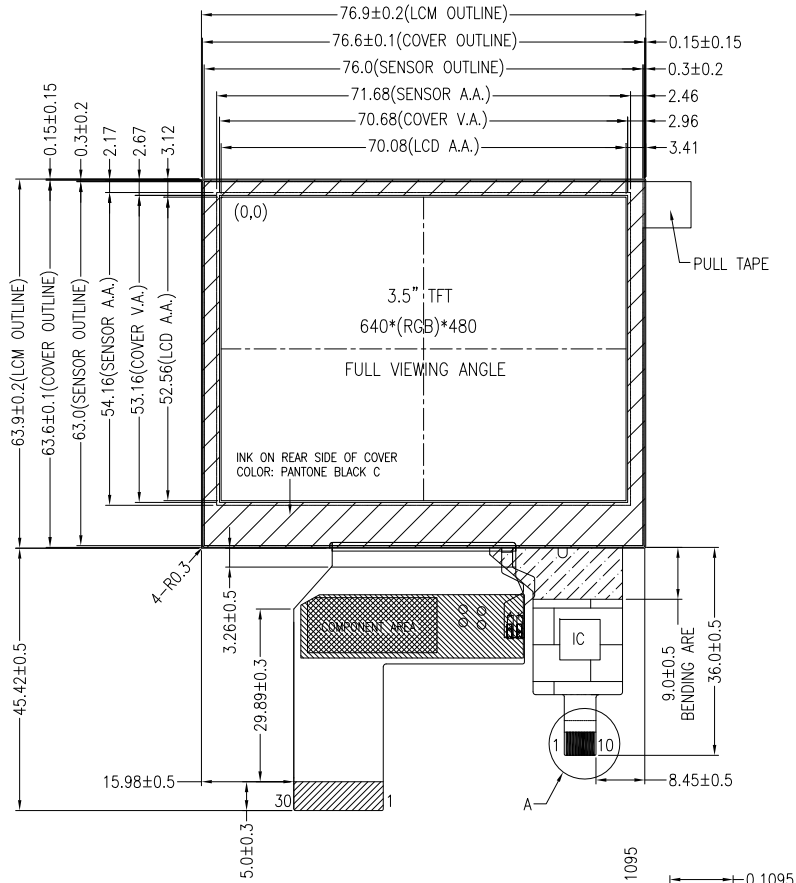


NO MECHANICAL HOUSING TO HOLD THE TFT AND THE TOUCH PANEL ON THIS PRODUCT, SO THE END UNIT'S MECHANICAL DESIGN MUST INCLUDE A HOUSING FOR PREVENTING THE SEPARATION OF THE TFT AND THE TOUCH PANEL.



PIXEL DETAIL (SCALE 100:1)

NOTES FOR TFT:

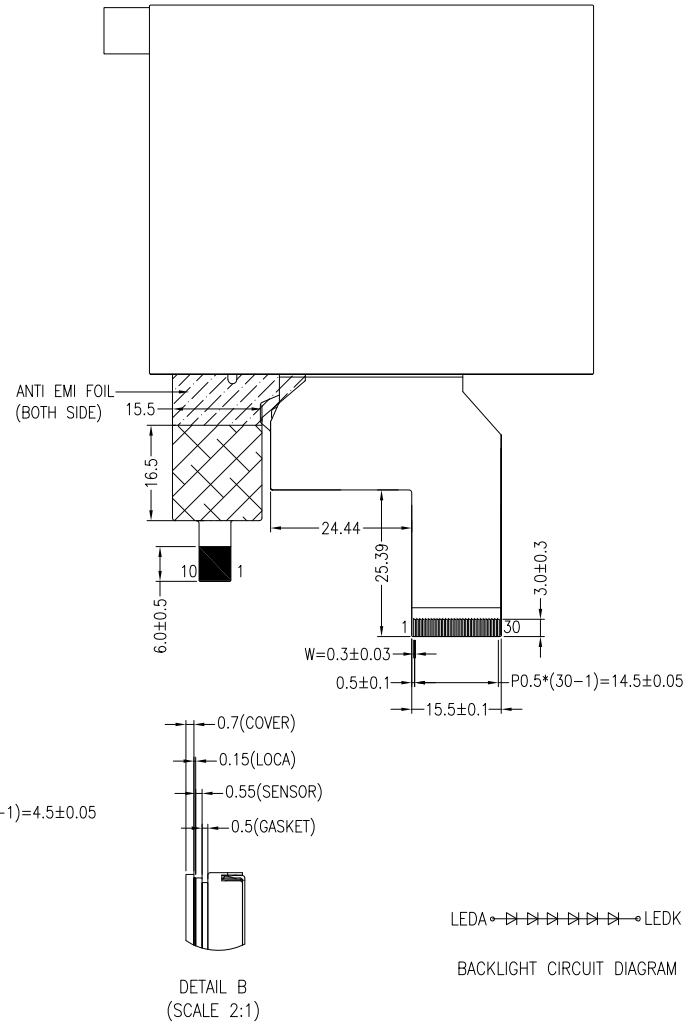
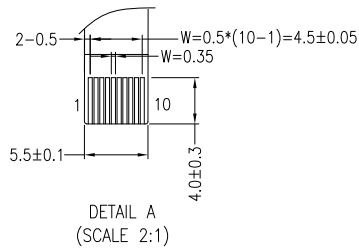
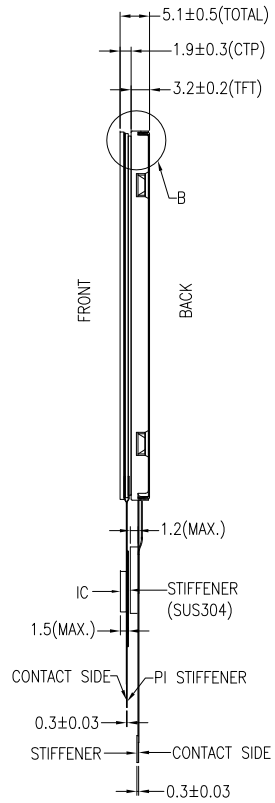
1. DISPLAY TYPE: TFT, TRANSMISSIVE, NORMALLY BLACK
2. OPERATING VOLTAGE: VDD=3.3V (TYP.)
3. VIEWING DIRECTION: FULL VIEWING ANGLE
4. DRIVER IC: ST7703
5. LED BACKLIGHT: 6-CHIP WHITE LED, If=20mA, Vf=16.2V~20.4V
6. TOP POLARIZER SURFACE TREATMENT: ANTI-GLARE

NOTES FOR OTHERS:

1. OPERATING TEMP.: -20°C ~ 70°C
2. STORAGE TEMP.: -30°C ~ 80°C
3. SURFACE LUMINANCE: 380 CD/M² (TYP.) WITH CTP
4. ONLY THE SINGLE LAYER AREA ON FPC IS BENDABLE AND THE MINIMUM BEND RADIUS IS 1.5MM
5. GENERAL TOLERANCE: ±0.3MM
6. ROHS COMPLIANT

NOTES FOR CTP:

1. 3.5 INCH PROJECTIVE CAPACITIVE TOUCH PANEL
2. COVER GLASS + SENSOR GLASS + FPCA
3. OPERATING VOLTAGE: VCC=3.3V
4. DRIVER IC: FT5446DOS-P03
5. INTERFACE: IIC
6. RESOLUTION: 640*480
7. MULTI FINGER: UP TO 5
8. HARDNESS OF COVER SURFACE: 7H
9. FIRMWARE FILE: TBD



PIN DESCRIPTION FOR TFT	
PIN	SYMBOL
1	LED+
2	LED+
3	LED-
4	LED-
5	NC
6	NC
7	GND
8	GND
9	GND
10	GND
11	MIPL_TDP3
12	MIPL_TDN3
13	GND
14	MIPL_TDP2
15	MIPL_TDN2
16	GND
17	MIPL_TCP
18	MIPL_TCN
19	GND
20	MIPL_TDP1
21	MIPL_TDN1
22	GND
23	MIPL_TDP0
24	MIPL_TDN0
25	GND
26	NC
27	LRSTB
28	VDD
29	VDD
30	IOVCC

PIN DESCRIPTION FOR CTP	
PIN	SYMBOL
1	VSS
2	VCC
3	SCL
4	NC
5	SDA
6	NC
7	/RST
8	NC
9	/INT
10	VSS

MIT MULTI-INNO TECHNOLOGY CO., LTD.

DRAWN BY:	CAROL	2022.10.26		MODULE P/N:
CHECKED BY:			SCALE : 1/1	MI0350AXT-1CP
APPROVED BY:			UNIT: mm	DESCRIPTION:
VERSION NO:	01		SHEET NO.: 1/1	TFT + CTP MODULE

01	FIRST ISSUE	CAROL	2022.10.26
VER.	REVISED DESCRIPTION	REVISOR	DATE