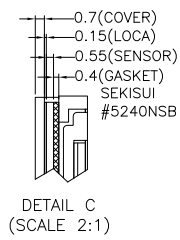
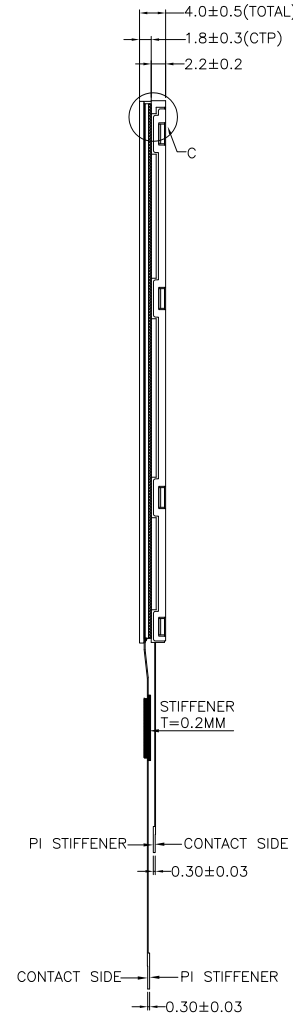
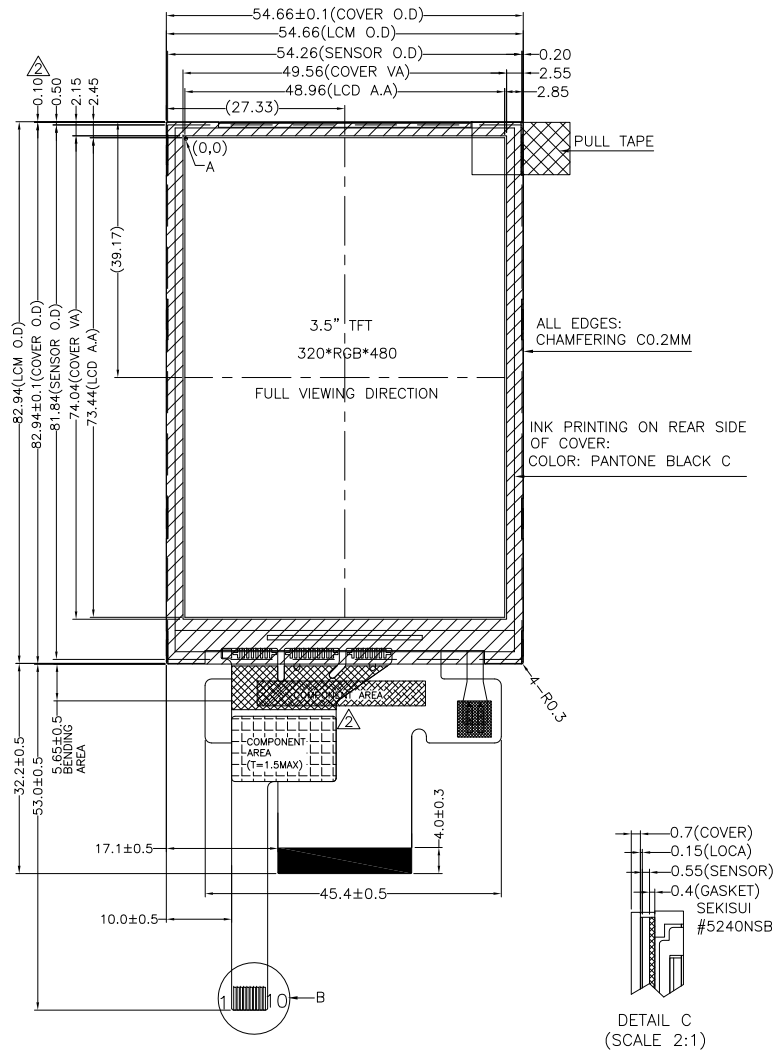


NO MECHANICAL HOUSING TO HOLD THE TFT AND THE TOUCH PANEL ON THIS PRODUCT, SO THE END UNIT'S MECHANICAL DESIGN MUST INCLUDE A HOUSING FOR PREVENTING THE SEPARATION OF THE TFT AND THE TOUCH PANEL.



NOTES FOR TFT:

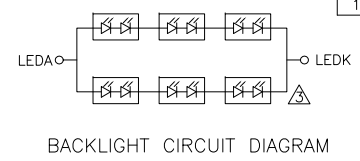
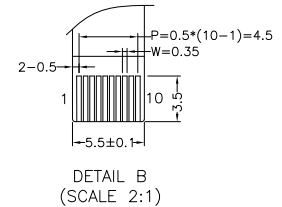
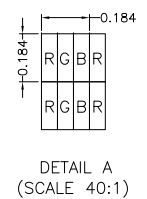
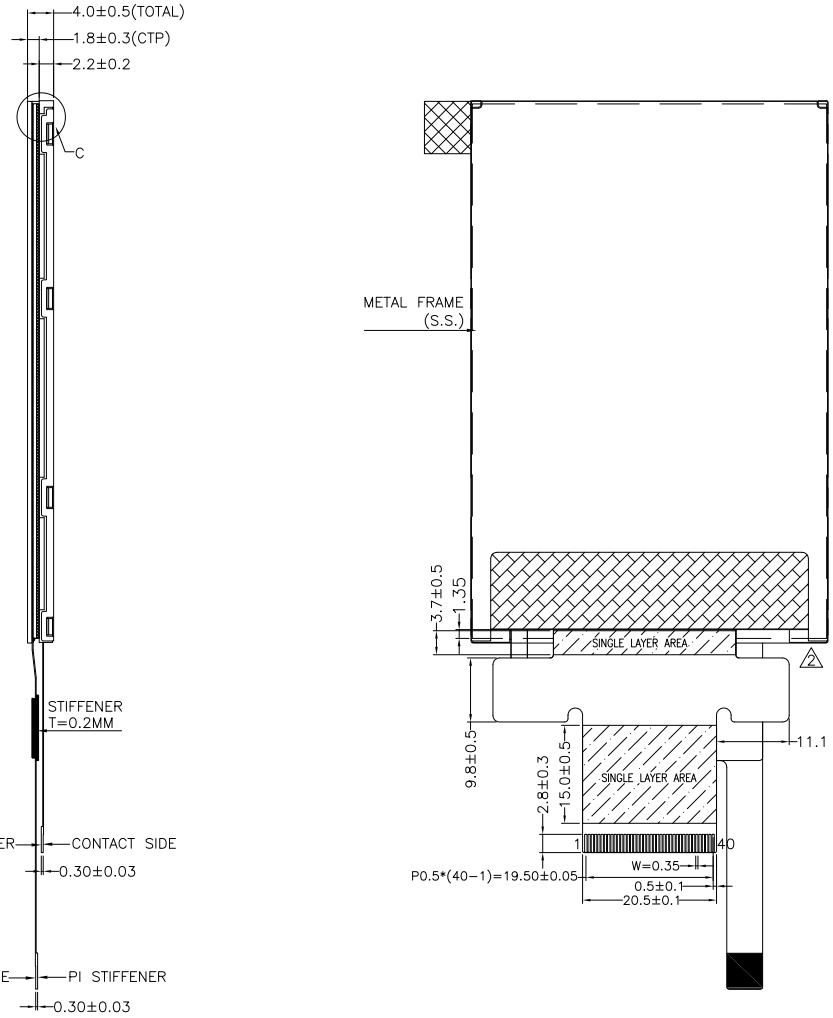
1. DISPLAY TYPE: TFT, TRANSMISSIVE, NORMALLY BLACK
2. OPERATING VOLTAGE: VCC=2.8V (TYP.), IOVCC=1.8V/2.8V
3. VIEWING DIRECTION: FULL VIEWING ANGLE
4. DRIVER IC: HX8357-D01
5. LED BACKLIGHT: 6-CHIP WHITE LED, If=40mA, Vf=17.4~19.8V
6. TOP POLARIZER SURFACE TREATMENT: LOW REFLECTION
7. RECOMMEND MATCHING CONNECTOR: FH19SC-40S-0.5SH OR EQUIVALENT

NOTES FOR OTHERS:

1. OPERATING TEMP.: -20°C ~ 70°C
2. STORAGE TEMP.: -30°C ~ 80°C
3. SURFACE LUMINANCE: 680 CD/M<sup>2</sup> (TYP.)
4. ONLY THE SINGLE LAYER AREA ON FPC IS BENDABLE AND THE MINIMUM BEND RADIUS IS 1.5MM
5. GENERAL TOLERANCE: ±0.2MM
6. ROHS COMPLIANT

NOTES FOR CTP:

1. 3.5 INCH PROJECTIVE CAPACITIVE TOUCH PANEL
2. COVER GLASS + SENSOR GLASS + FPCA
3. OPERATING VOLTAGE: VDD=2.8V~3.3V
4. DRIVER IC: FT5446-P03
5. INTERFACE: I<sup>2</sup>C
6. RESOLUTION: 320\*480 DOTS
7. MULTI FINGER: UP TO 5
8. HARDNESS OF COVER SURFACE: ≥6H (750G)
9. FIRMWARE FILE: MI0350CMP-C1(FT5446-P03) FIRMWARE\_V04\_20200426\_ALL.BIN



PIN ASSIGNMENT FOR LCM	
NO.	SYMBOL
1	GND
2	VCC
3	IOVCC
4	NC
5	DB17
6	DB16
7	DB15
8	DB14
9	DB13
10	DB12
11	DB11
12	DB10
13	DB9
14	DB8
15	DB7
16	DB6
17	DB5
18	DB4
19	DB3
20	DB2
21	DB1
22	DB0
23	SDA
24	DOTCLK
25	ENABLE
26	HSYNC
27	VSYNC
28	RDX
29	WRX_SCL
30	DCX
31	CSX
32	RESX
33	IM0
34	IM1
35	IM2
36	NC
37	LEDA
38	LEDA
39	LEDK
40	LEDK

PIN ASSIGNMENT FOR CTP	
NO.	SYMBOL
1	VSS
2	VDD
3	SCL
4	NC
5	SDA
6	NC
7	RST
8	NC
9	INT
10	VSS

03 CHANGE THE WICKS TO DUAL-DICE LEADS. CHANGE THE SURFACE LUMINANCE FROM 580CD/M <sup>2</sup> TO 680CD/M <sup>2</sup> . CHANGE THE DRIVER IC FROM HX8357D TO HX8357-D01.		RITA	2022.09.02	DRAWN BY: RITA 2022.02.07		MULTI-INNO TECHNOLOGY CO., LTD.	
02 CORRECT THE CTP FPC SHAPE. CORRECT THE ASSEMBLY SIZE OF TFT OUTLINE TO CTP OUTLINE. CORRECT THE TOP POLARIZER SURFACE TREATMENT.		RITA	2022.05.13	CHECKED BY:		SCALE : 1/1	
01 FIRST ISSUE		RITA	2022.02.07	APPROVED BY:		UNIT: mm	
VER. REVISED DESCRIPTION		REVISER	DATE	VERSION NO: 03		DESCRIPTION: TFT + CTP MODULE	
				SHEET NO.: 1/1		MODULE P/N: MI0350AQT-8CP	