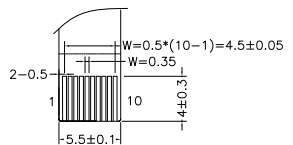
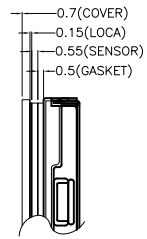
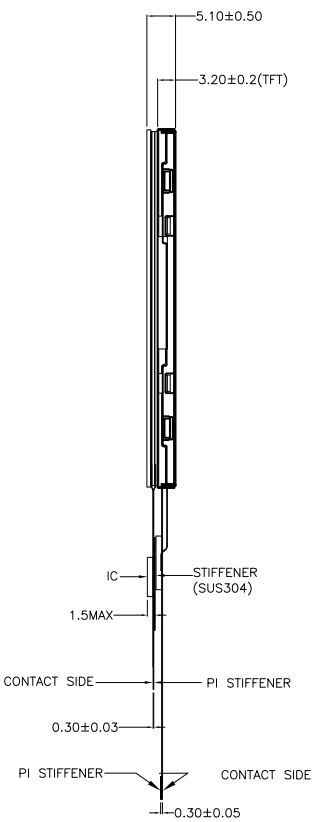


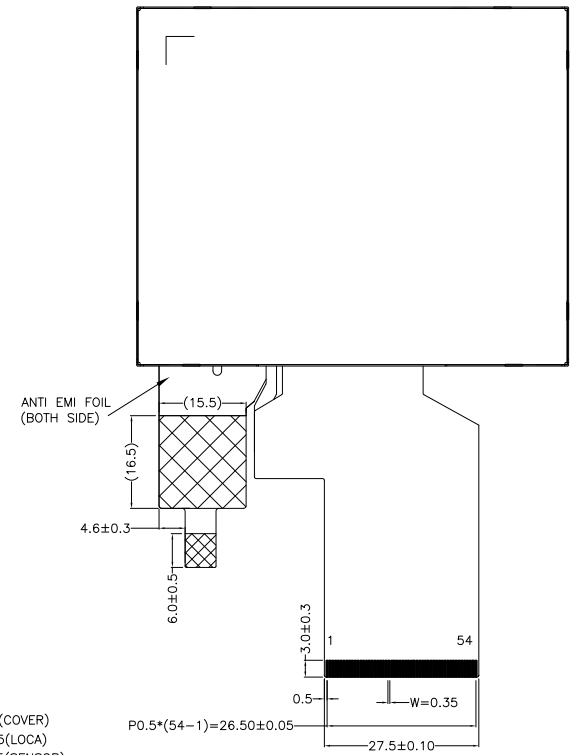
DETAIL A (SCALE 30:1)



DETAIL B (SCALE 2:1)



DETAIL B (SCALE 2:1)



BACKLIGHT CIRCUIT DIAGRAM

PIN ASSIGNMENT FOR TFT

NO.	SYMBOL	NO.	SYMBOL
1	LEDK	28	R0
2	LEDK	29	R1
3	LEDA	30	R2
4	LEDA	31	R3
5	NC	32	R4
6	NC	33	R5
7	NC	34	R6
8	RESET	35	R7
9	SPENA	36	HSYNC
10	SPCLK	37	VSING
11	SPDAT	38	DCLK
12	B0	39	NC
13	B1	40	NC
14	B2	41	VDD
15	B3	42	VDD
16	B4	43	NC
17	B5	44	NC
18	B6	45	NC
19	B7	46	NC
20	G0	47	NC
21	G1	48	SEL2
22	G2	49	SEL1
23	G3	50	SEL0
24	G4	51	NC
25	G5	52	DEN
26	G6	53	GND
27	G7	54	GND

PIN ASSIGNMENT FOR CTP

NO.	SYMBOL	NO.	SYMBOL
1	VSS	6	NC(MISO)
2	VCC	7	RST
3	SCL(SSEL)	8	NC
4	NC(SCK)	9	INT
5	SDA(MOSI)	10	VSS

NOTES FOR TFT:

1. DISPLAY TYPE: TFT, TRANSMISSIVE.
2. OPERATING VOLTAGE: VDD=3.3V.
3. VIEWING DIRECTION: 12 O'CLOCK.
4. IC DRIVER: HX8238D.
5. LED BACKLIGHT: 6-CHIP WHITE LED, If=20mA, Vf=19.2V.
6. TOP POLARIZER SURFACE TREATMENT: ANTI-GLARE.
7. RECOMMEND MATCHED CONNECTOR: FH19SC-40S-0.5SH OR EQUIVALENT.

NOTES FOR CTP:

1. 3.5 INCH PROJECTIVE CAPACITIVE TOUCH PANEL.
2. OPERATING VOLTAGE: VCC=3.3V.
3. COVER GLASS + SENSOR GLASS + FPCC.
4. RESOLUTION: 320 X 240 DOTS.
5. IC DRIVER: FT5446-P03.
6. MULTI FINGER: UP TO 5.
7. HARDNESS OF COVER SURFACE: 7H.

OTHERS:

1. OPERATING TEMP: -20°C ~ 70°C.
2. STORAGE TEMP: -30°C ~ 80°C.
3. SURFACE LUMINANCE: 680CD/M²(TYP.).
4. GENERAL TOLERANCE: ±0.2MM.
5. RoHS COMPLIANT.

		MULTI-INNO TECHNOLOGY CO.,LTD.		
		DRAWN BY: RITA 2020.11.03 CHECKED BY: APPROVED BY: VERSION NO: 01	SCALE : 1/1 UNIT: mm 	MODULE P/N: MI0350AGT-3CP4 DESCRIPTION: TFT & CTP MODULE

01	FIRST ISSUE	RITA	2020.11.03
VER.	REVISED DESCRIPTION	REVISER	DATE