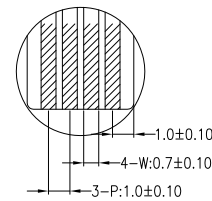
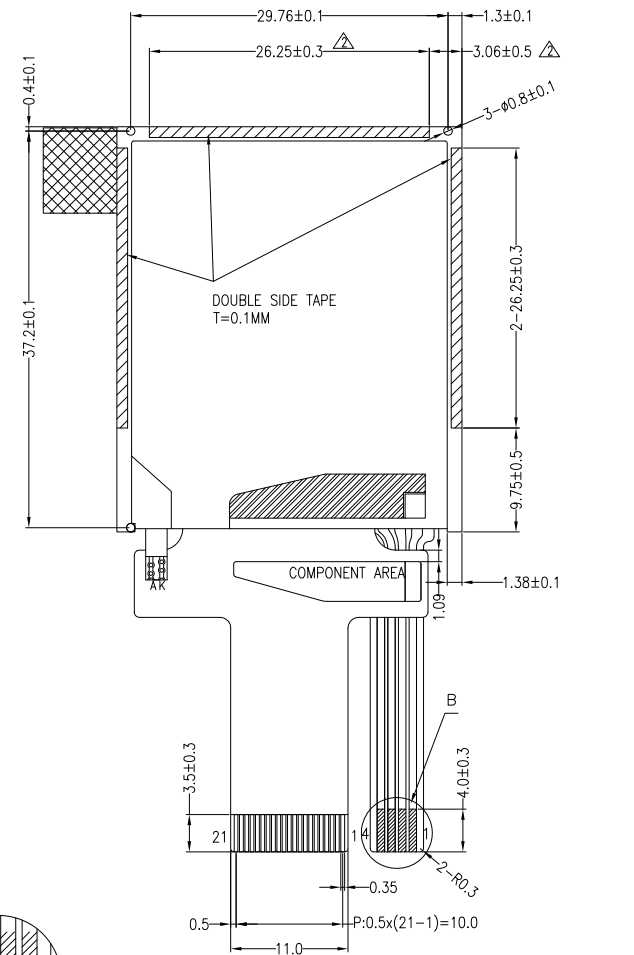


DETAIL A  
(SCALE 40:1)



DETAIL B  
(SCALE 2:1)



BACKLIGHT CIRCUIT DIAGRAM

PIN DESCRIPTION FOR LCM	
PIN	SYMBOL
1	A
2	K
3	VDD
4	VDDI
5	GND
6	IM2
7	SPI4W
8	/CS
9	RESET
10	RD
11	WR
12	RS
13	D7
14	D6
15	D5
16	D4
17	D3
18	D2
19	D1
20	DO
21	GND

PIN DESCRIPTION FOR RTP	
PIN	SYMBOL
1	YU
2	XL
3	YD
4	XR

NOTES:

1. DISPLAY TYPE: TFT, TRANSMISSIVE, NORMALLY WHITE
2. OPERATING VOLTAGE: VDD=2.8V (TYP.)
3. VIEWING DIRECTION: 6 O'CLOCK
4. DRIVER IC: ST7735S
5. OPERATING TEMP.: -20°C ~ 70°C
6. STORAGE TEMP.: -30°C ~ 80°C
7. LED BACKLIGHT: 1-CHIP WHITE LED, IF=15mA, VF=3.2V±0.2V
8. SURFACE LUMINANCE: 190CD/M<sup>2</sup> (TYP.)
9. TOP POLARIZER SURFACE TREATMENT: GLARE
10. GENERAL TOLERANCE: ±0.2MM
11. ROHS COMPLIANT

MULTI-INNO TECHNOLOGY CO., LTD.			
DRAWN BY:	RITA	2018.09.29	SCALE : 1/1
CHECKED BY:			MODULE P/N:
APPROVED BY:			MI0145B1T-3RP
VERSION NO:	02		DESCRIPTION:
			TFT + RTP MODULE

VER.	REVISED DESCRIPTION	REVISOR	DATE
02	CORRECT THE SIZE OF D.S.T.	RITA	2020.08.06
01	FIRST ISSUE	RITA	2018.09.29