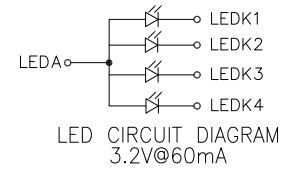


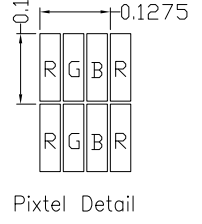
PIN DESCRIPTION

1	GND
2	GND
3	LEDA
4	LEDK1
5	LEDK2
6	LEDK3
7	LEDK4
8	YU
9	XL
10	YD
11	XR
12	RST
13	FMARK
14	WR
15	RD
16	RS
17	CS
18	VCC
19	IDVCC
20	DB0
21	DB1
22	DB2
23	DB3
24	DB4
25	DB5
26	DB6
27	DB7
28	GND

焊锡高度0.3MAX
附贴绝缘TAFE
FPC弯折参考示意图
展开出货



- NOTES:
1. DISPLAY TYPE: TFT, TRANSMISSIVE.
 2. OPERATING VOLTAGE: VDD=2.8V.
 3. VIEWING DIRECTION: 6 O'CLOCK.
 4. IC DRIVER: ILI9341V.
 5. OPERATING TEMP.: -20°C ~ 70°C.
 6. STORAGE TEMP.: -30°C ~ 80°C.
 7. LED BACKLIGHT: 4-CHIP WHITE LED, If=60mA,Vf=3.2V.
 8. SURFACE LUMINANCE: 230cd/m²(TYP.).
 9. TOP POLARIZER SURFACE TREATMENT: GLARE.
 10. GENERAL TOLERANCE: ±0.2.
 11. RoHS COMPLIANT.



01	FIRST ISSUE	2016.11.11
VER.	REVISED DESCRIPTION	DATE

MII MULTI-INNO TECHNOLOGY CO.,LTD.

DRAWN BY:	RITA	2016.11.11	SCALE : 1/1	MODULE P/N:
CHECKED BY:			UNIT:	MI0200WT-2
APPROVED BY:			mm	DESCRIPTION:
VERSION NO:	01			TFT MODULE