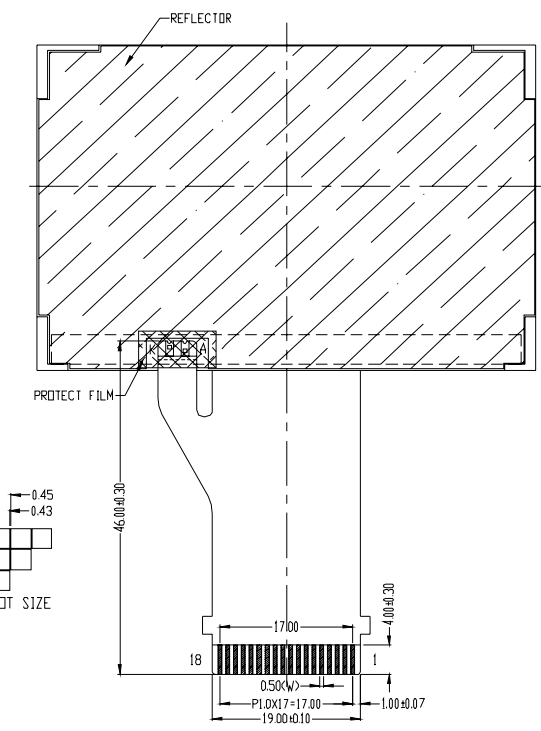
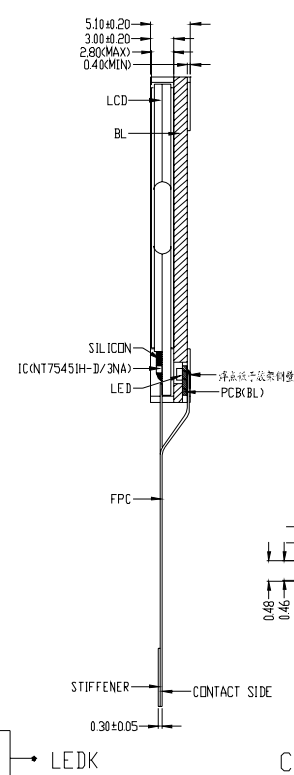
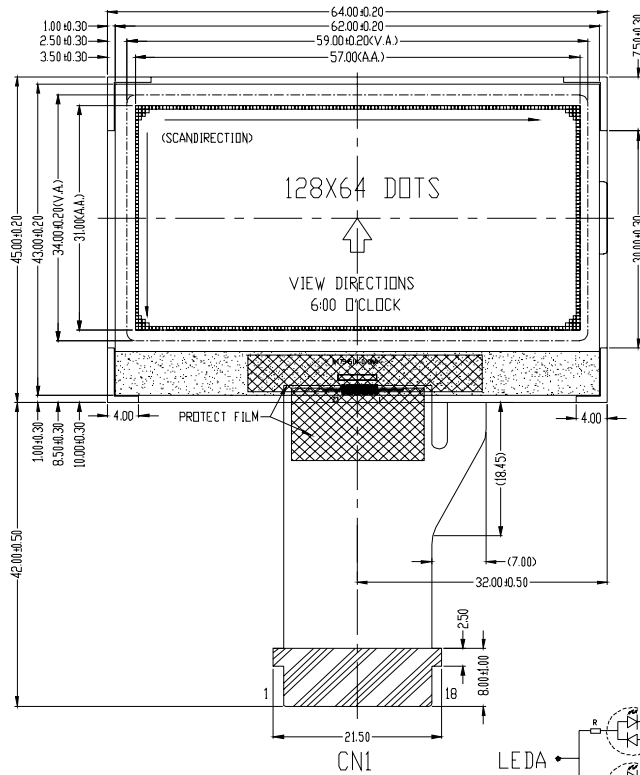


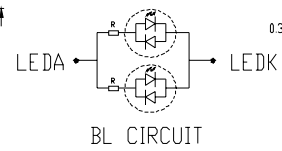


EXTERNAL DIMENSIONS



NOTE

1. LCD:FSTN/POSITIVE/TRANSFLECTIVE/6:00 O'CLOCK
2. OPERATING TEMPERATURE: -20°C TO 50°C
STORAGE TEMPERATURE: -30°C TO 60°C
3. DRIVE IC: NT75451H-D/3NA
4. 1/65 DUTY, 1/9 BAIS, VDP=10.5V, VDD=3.3V
5. LED SIDE BL: WHITE, VF=5.0V, IF=30mA.
6. FPC CONNECTOR: AFP-1018X-T (ATOM).
7. ROHS COMPLIANT.



CN1

1	2	3	4	5	6	7	8	9	10	11	12	13	14	15	16	17	18
PI	P2	V0	VSS	VDD	SI	SCL	A0	/RES	/CS1	DIP-PWR	LEDA	LEDA	LEDK	LEDK	NC	PI7	PI8