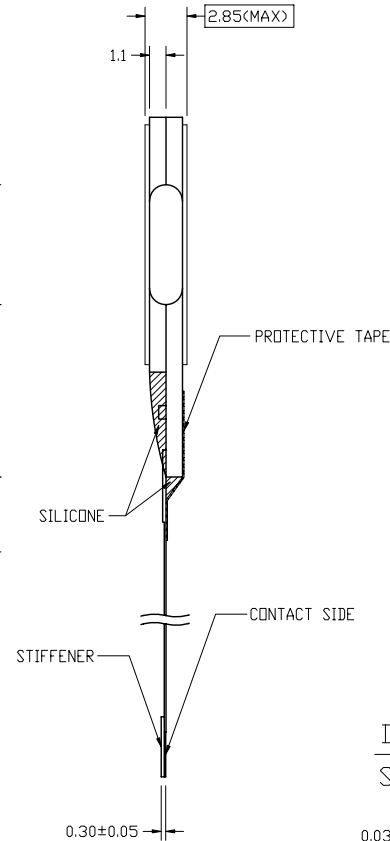
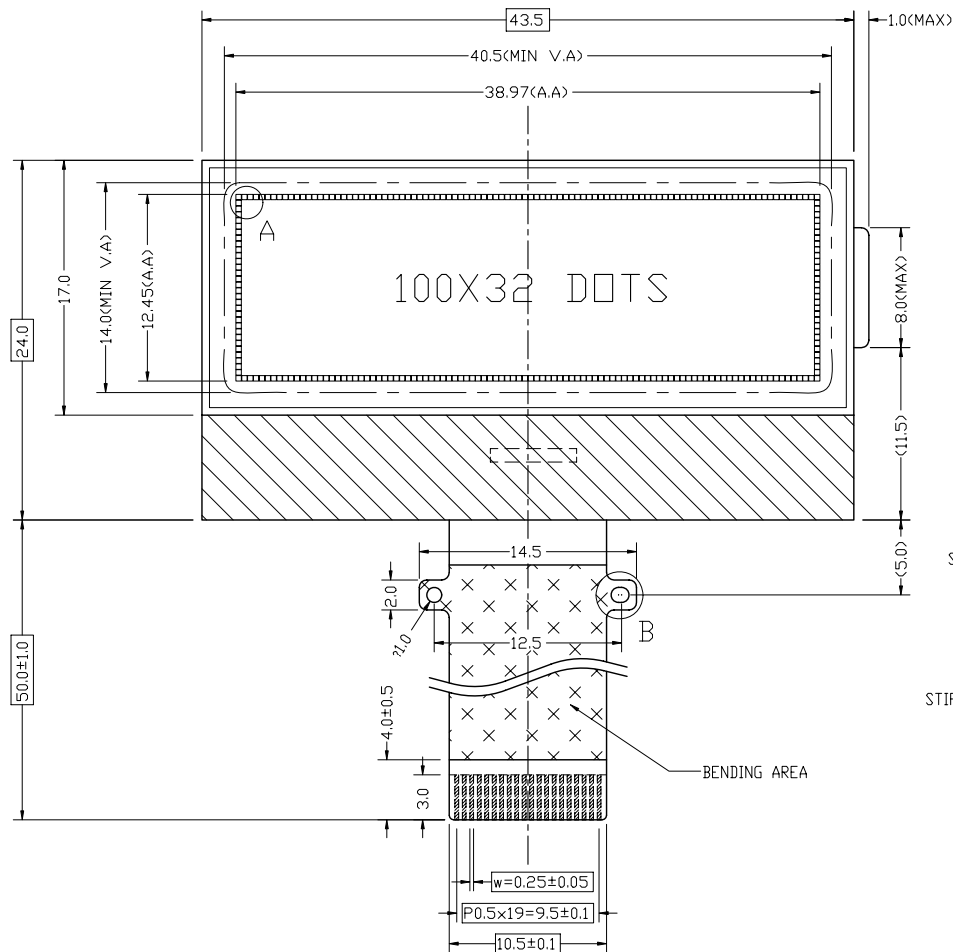
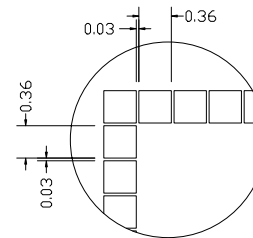


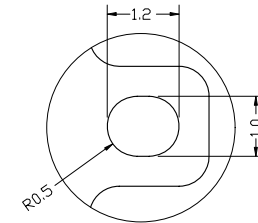
SYM	REV	DESCRIPTION	DATA
	G-1	NEW DRAWING	08.11.4



DETAIL A:  
SCALE 6:1



DETAIL B:  
SCALE 4:1



NOTES:

1. DISPLAY TYPE: FSTN
2. VIEWING DIRECTION: 6:00
3. POLARIZER MODE: TRANFLECTIVE/POSITIVE
4. DRIVE METHOD: 1/33 DUTY 1/6 BIAS
5. LCD OPERATING VOLTAGE: 7.0V  
RECOMMEND: VDD= 3.0V
6. OPERATING TEMP.: -20°C~+60°C
7. STORAGE TEMP.: -30°C~+70°C
8. IC: ST7565R
9. WITHOUT BACKLIGHT
10. UNMARKED TOLERANCE: ±0.3mm
11. THE CONTROLLED DIMENSIONS MASK TO BE
12. REQUIREMENT ON ENVIRONMENTAL PROTECTION:RoHS

# MULTI-INNO TECHNOLOGY CO.,LTD.

DRAWN BY:	TITLE: MI10032A-G	
ME CHECKED BY:	DWG NO: G-1	
EE CHECKED BY:	SCALE:	SHEET NO: 1 OF 1
APPROVED BY:		