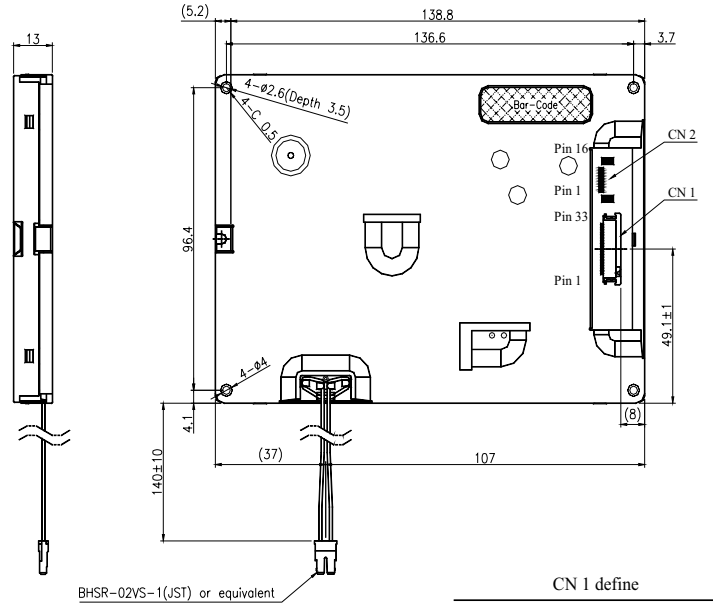
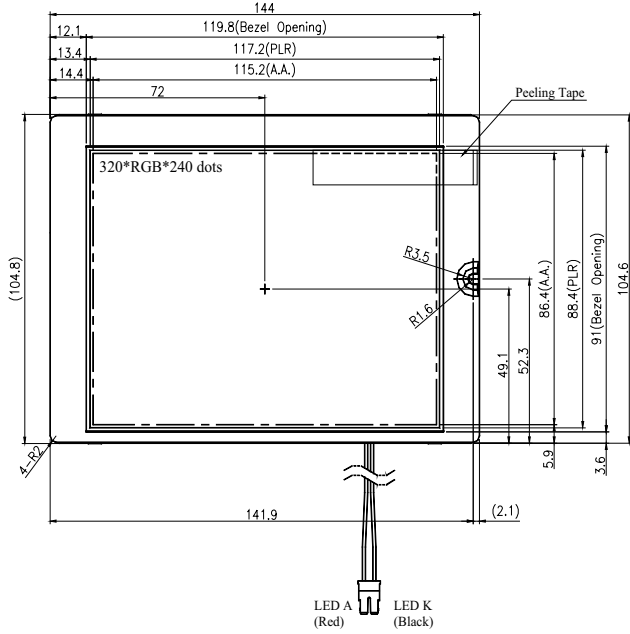




MODULE NO.: MI0570JT-3

Ver A



- Note: 1. Tolerance is  $\pm 0.5$  unless otherwise noted.  
 2. CN 1 connector: 08-6210-033-340-800(ELCO) or equivalent  
 3. Brightness : 400cd/m<sup>2</sup> (Typ)  
 4. for RoHS

CN 2 define

1. SPENA	9. D2
2. SPCK	10. D1
3. SPDA	11. D0
4. D7	12. DGND
5. D6	13. CLK
6. D5	14. DGND
7. D4	15. DVDD
8. D3	16. DVDD

CN 1 define

1. GND	12. GND	23. B3
2. CLK1	13. G0	24. B4
3. HS(HSYNC)	14. G1	25. B5
4. VS(VSYNC)	15. G2	26. GND
5. GND	16. G3	27. DE
6. R0	17. G4	28. VCC
7. R1	18. G5	29. VCC
8. R2	19. GND	30. R/L
9. R3	20. B0	31. U/D
10. R4	21. B1	32. NC
11. R5	22. B2	33. GND