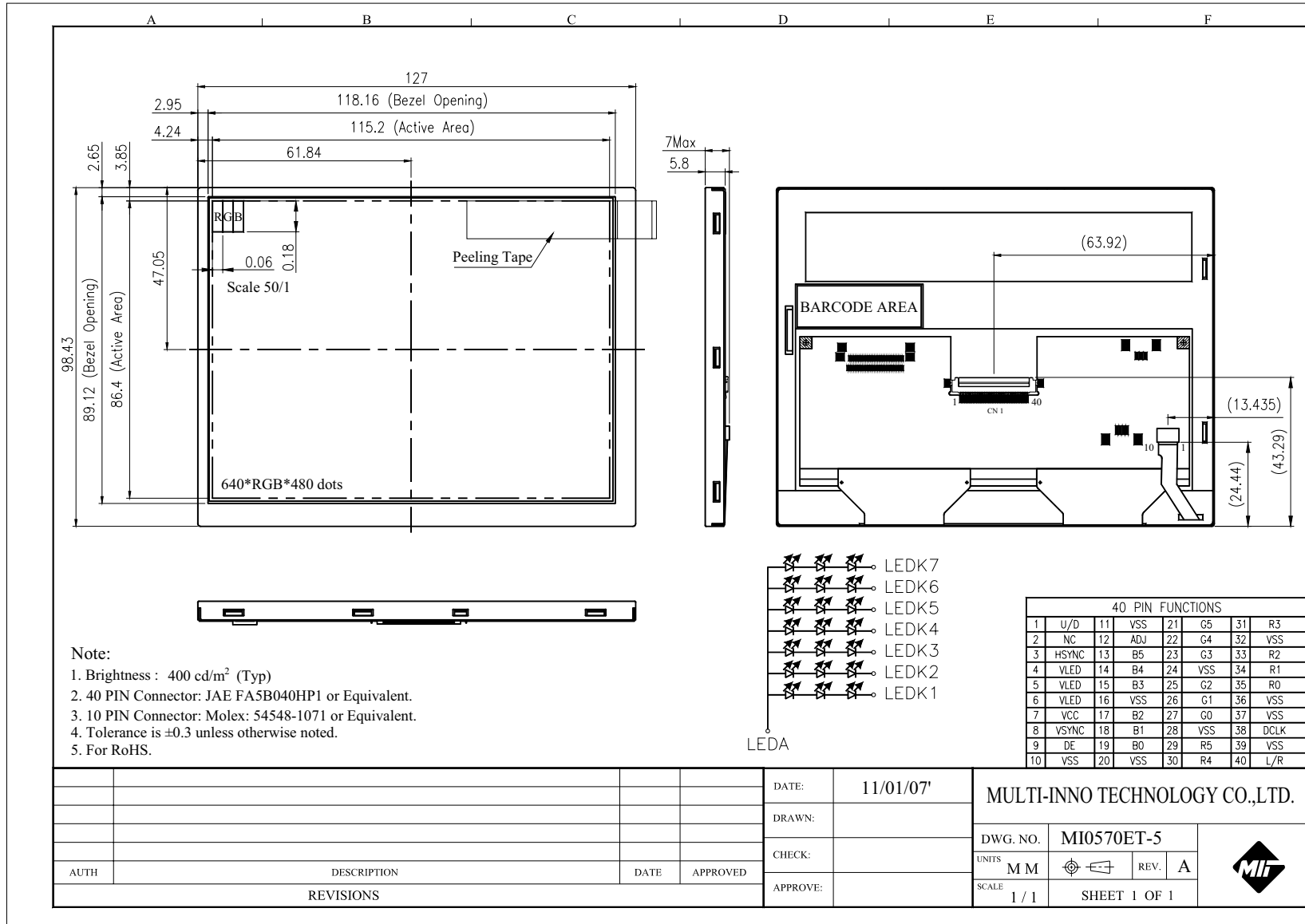




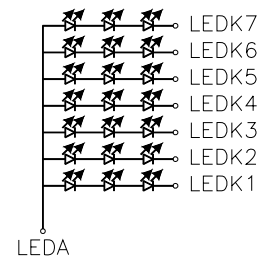
MODULE NO.: MI0570ET-5

Ver B



**Note:**

1. Brightness : 400 cd/m<sup>2</sup> (Typ)
2. 40 PIN Connector: JAE FA5B040HP1 or Equivalent.
3. 10 PIN Connector: Molex: 54548-1071 or Equivalent.
4. Tolerance is ±0.3 unless otherwise noted.
5. For RoHS.



40 PIN FUNCTIONS							
1	U/D	11	VSS	21	G5	31	R3
2	NC	12	ADJ	22	G4	32	VSS
3	HSYNC	13	B5	23	G3	33	R2
4	VLED	14	B4	24	VSS	34	R1
5	VLED	15	B3	25	G2	35	RO
6	VLED	16	VSS	26	G1	36	VSS
7	VCC	17	B2	27	G0	37	VSS
8	VSYSN	18	B1	28	VSS	38	DCLK
9	DE	19	B0	29	R5	39	VSS
10	VSS	20	VSS	30	R4	40	L/R

				DATE:	11/01/07'	MULTI-INNO TECHNOLOGY CO.,LTD.		
				DRAWN:				
				CHECK:		DWG. NO.	MI0570ET-5	
				APPROVE:		UNITS	M M	REV. A
AUTH	DESCRIPTION	DATE	APPROVED			SCALE	1 / 1	
REVISIONS						SHEET 1 OF 1		

