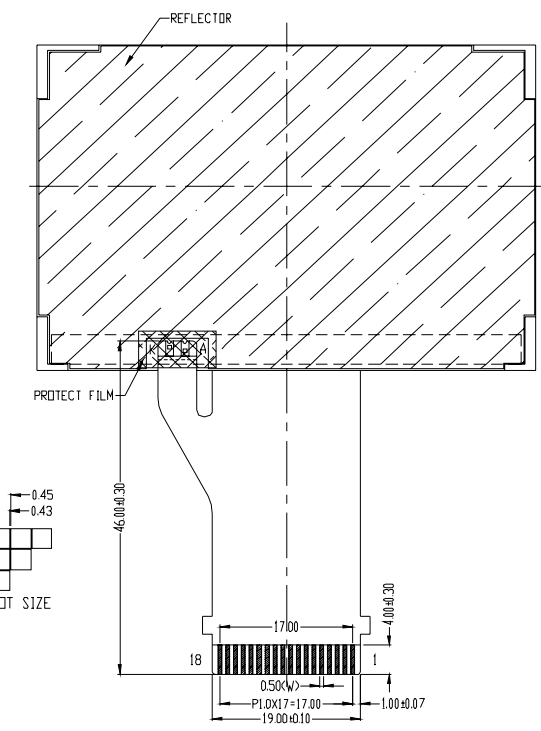
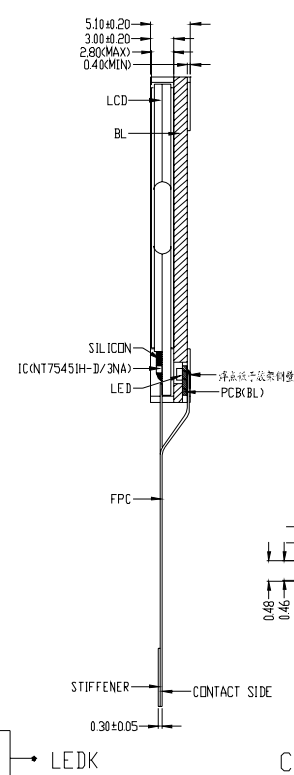
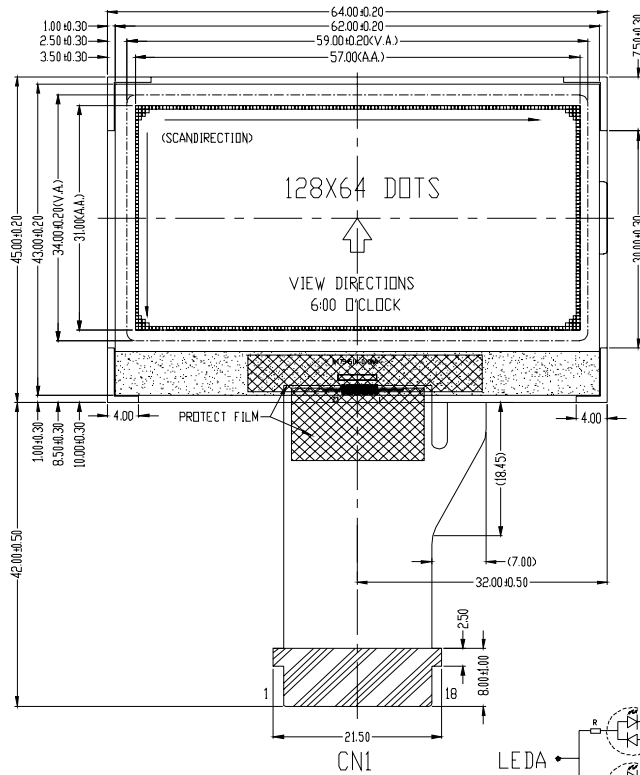


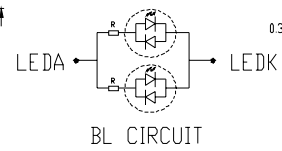


EXTERNAL DIMENSIONS



NOTE

1. LCD:FSTN/POSITIVE/TRANSFLECTIVE/6:00 O'CLOCK
2. OPERATING TEMPERATURE: -20°C TO 50°C
STORAGE TEMPERATURE: -30°C TO 60°C
3. DRIVE IC: NT75451H-D/3NA
4. 1/65 DUTY,1/9 BAIS,VDP=10.5V,VDD=3.3V
5. LED SIDE BL: WHITE, VF=5.0V,IF=30mA.
6. FPC CONNECTOR: AFP-1018X-T (ATOM).
7. ROHS COMPLIANT.



CN1

| | | | | | | | | | | | | | | | | | |
|----|----|----|-----|-----|----|-----|----|------|------|---------|------|------|------|------|----|-----|-----|
| 1 | 2 | 3 | 4 | 5 | 6 | 7 | 8 | 9 | 10 | 11 | 12 | 13 | 14 | 15 | 16 | 17 | 18 |
| PI | P2 | V0 | VSS | VDD | S1 | SCL | A0 | /RES | /CS1 | DIP-PWR | LEDA | LEDA | LEDK | LEDK | NC | PI7 | PI8 |