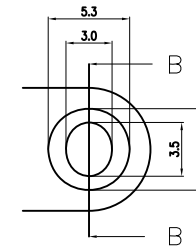
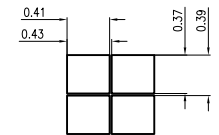


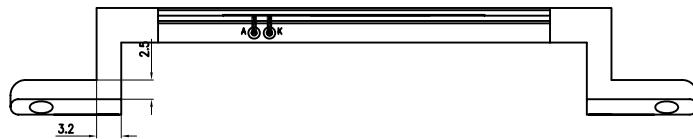
Section B-B



DETAIL A



DISPLAY PATTERN



NOTES:

1. DISPLAY TYPE: STN Y/G, TRANSMISSIVE/POSITIVE.
2. DRIVE METHOD: 1/64DUTY, 1/9BIAS, VOP=9.3V, VDD=2.8V
3. VIEWING DIRECTION: 6 O'CLOCK.
4. IC DRIVER: ST7565R.
5. OPERATING TEMP: -20°C ~ 70°C.
6. STORAGE TEMP: -30°C ~ 80°C.
7. LED BACKLIGHT: BLUE EDGE LEDA-LEDK=3.1±0.2V 60mA 4SMD, THE B/L BRIGHTNESS: 70cd/m².
8. ALL UNMARKED TOLERANCES: ±0.2.
9. ENVIRONMENT REQUEST.

PIN CONNECTION:

| | | | | | | | | | | | | | | | | |
|------|------|-------|-------|-------|-------|-------|----|----|----|----|----|----|-----|------|------|-----|
| PIN | 1 | 2 | 3 | 4 | 5 | 6 | 7 | 8 | 9 | 10 | 11 | 12 | 13 | 14 | 15 | 16 |
| NAME | NC | /CS | /RES | A0 | WR | /RD | D0 | D1 | D2 | D3 | D4 | D5 | D6 | D7 | VDD | VSS |
| PIN | 17 | 18 | 19 | 20 | 21 | 22 | 23 | 24 | 25 | 26 | 27 | 28 | 29 | 30 | 31 | 32 |
| NAME | VOUT | CAP3+ | CAP1- | CAP1+ | CAP2+ | CAP2- | V4 | V3 | V2 | V1 | V0 | VR | IRS | LEDK | LEDA | NC |

| | | | |
|---------|---|--------------------------------|------------|
| 05 | MODIFY LED OUTLINE DIMENSION 07/04-08 | CUSTOMER APVL | DATE |
| 04 | ADD DOUBLE SIDE ADHESIVE TAPE 06/01-08 | DRAWN | SCALE |
| 03 | MODIFY FPC PIN 21/11-07 | DFTG CHK | UNIT |
| 02 | MODIFY FPC PIN 20/11-07 | ENGR CHK | mm |
| 01 | MODIFY LCD 17/11-07 | APPROVAL | MODEL |
| 07 | MODIFY DOUBLE SIDE ADHESIVE TAPE LENGTH 25/4-08 | MULTI-INNO TECHNOLOGY CO.,LTD. | M12864B2-G |
| 06 | ADD DOUBLE SIDE ADHESIVE TAPE ON LED 08/01-08 | | DWG NO |
| VERSION | MODIFYCONTENT | | 07 |
| | | | PAGE |
| | | | 1/5 |