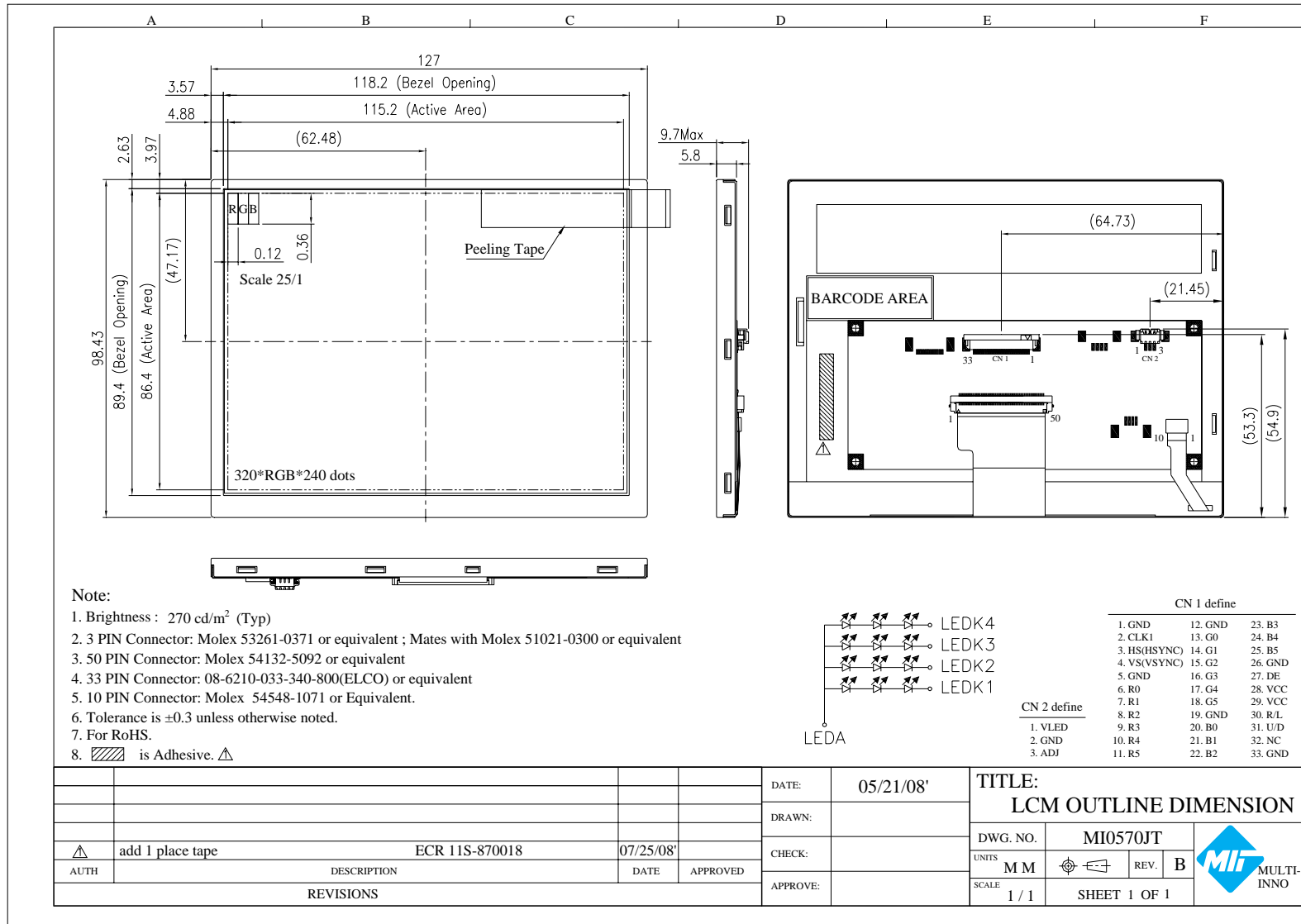




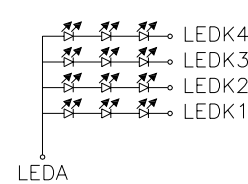
MODULE NO.: MI0570JT

Ver E



Note:

- Brightness : 270 cd/m² (Typ)
- 3 PIN Connector: Molex 53261-0371 or equivalent ; Mates with Molex 51021-0300 or equivalent
- 50 PIN Connector: Molex 54132-5092 or equivalent
- 33 PIN Connector: 08-6210-033-340-800(ELCO) or equivalent
- 10 PIN Connector: Molex 54548-1071 or Equivalent.
- Tolerance is ±0.3 unless otherwise noted.
- For RoHS.
- is Adhesive. is RoHS.



CN 1 define		
1. GND	12. GND	23. B3
2. CLK1	13. G0	24. B4
3. HS(HSYNC)	14. G1	25. B5
4. VS(VSYNC)	15. G2	26. GND
5. GND	16. G3	27. DE
6. R0	17. G4	28. VCC
7. R1	18. G5	29. VCC
8. R2	19. GND	30. R/L
9. R3	20. B0	31. U/D
10. R4	21. B1	32. NC
11. R5	22. B2	33. GND

CN 2 define	
1. VLED	
2. GND	
3. ADJ	

				DATE:	05/21/08'	TITLE:		LCM OUTLINE DIMENSION	
				DRAWN:		DWG. NO.		MI0570JT	
				CHECK:		UNITS	M M	REV.	B
				APPROVE:		SCALE	1 / 1	SHEET 1 OF 1	
	add 1 place tape	DESCRIPTION	ECR 11S-870018	DATE	07/25/08'				
AUTH				APPROVED					
REVISIONS									

