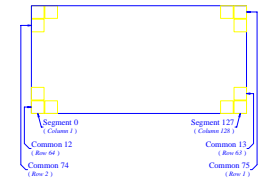
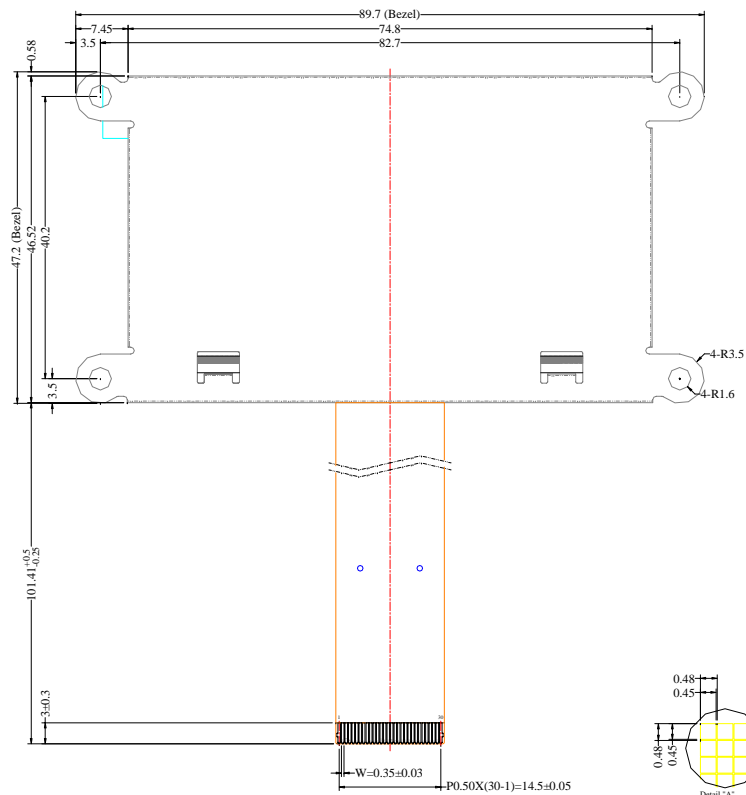
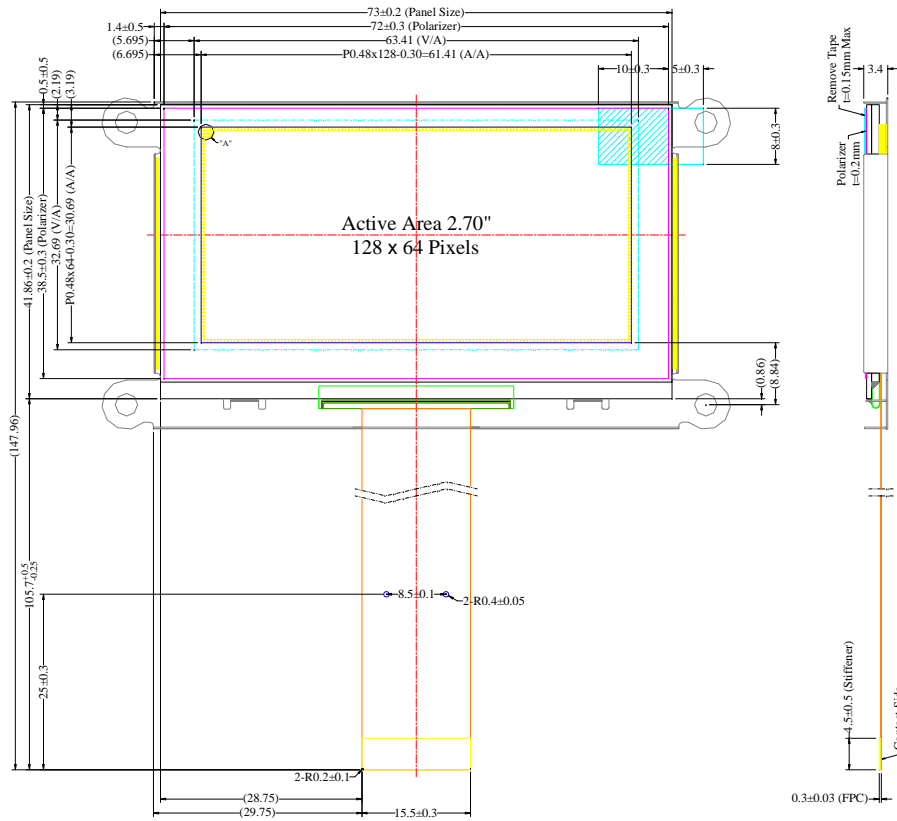


Item	Date	Remark
A	20070920	Original Drawing



Pin	Symbol
1	N.C. (GND)
2	VCC
3	VCOMH
4	IREF
5	D7
6	D6
7	D5
8	D4
9	D3
10	D2
11	D1
12	D0
13	E/RD#
14	R/W#
15	D/C#
16	RES#
17	CS#
18	N.C.
19	BS2
20	BS1
21	VDD
22	N.C.
23	N.C.
24	N.C.
25	N.C.
26	N.C.
27	N.C.
28	N.C.
29	VSS
30	VSL

Notes:

- Color: Yellow
- Driver IC: SSD1325
- TCP Number: SSD1325T6
FPC Number: UT-0225-P01
- Interface:
8-bit 68XX/80XX Parallel, 4-wire SPI
- General Tolerance: ± 0.30

MULTI-INNO TECHNOLOGY CO.,LTD.							Drawing Number	Rev.
	Unless Otherwise Specified		Title	MI12864AO-1 Folding Type OEL Display Module Pixel Number: 128 x 64, Monochrome, TCP+FPC Package			MI12864AO-1	A
	Unit	mm					Material	
	General Roughness		Soda Lime / Polyimide					
	Tolerance		Drawn	E.E.	Panel / E.	P.M.	Scale Sheet Size	
	Dimension	± 0.3	By	Humphrey Lin	Ting-Kuo Hu	Ivy Lo	Sean Lin	1:1 1 of 1 A3
Angle	± 1	Date	20070920	20070920	20070920	20070920		