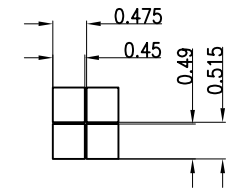


DISPLAY PATTERN



PIN CONNECTION

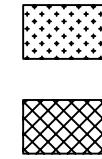
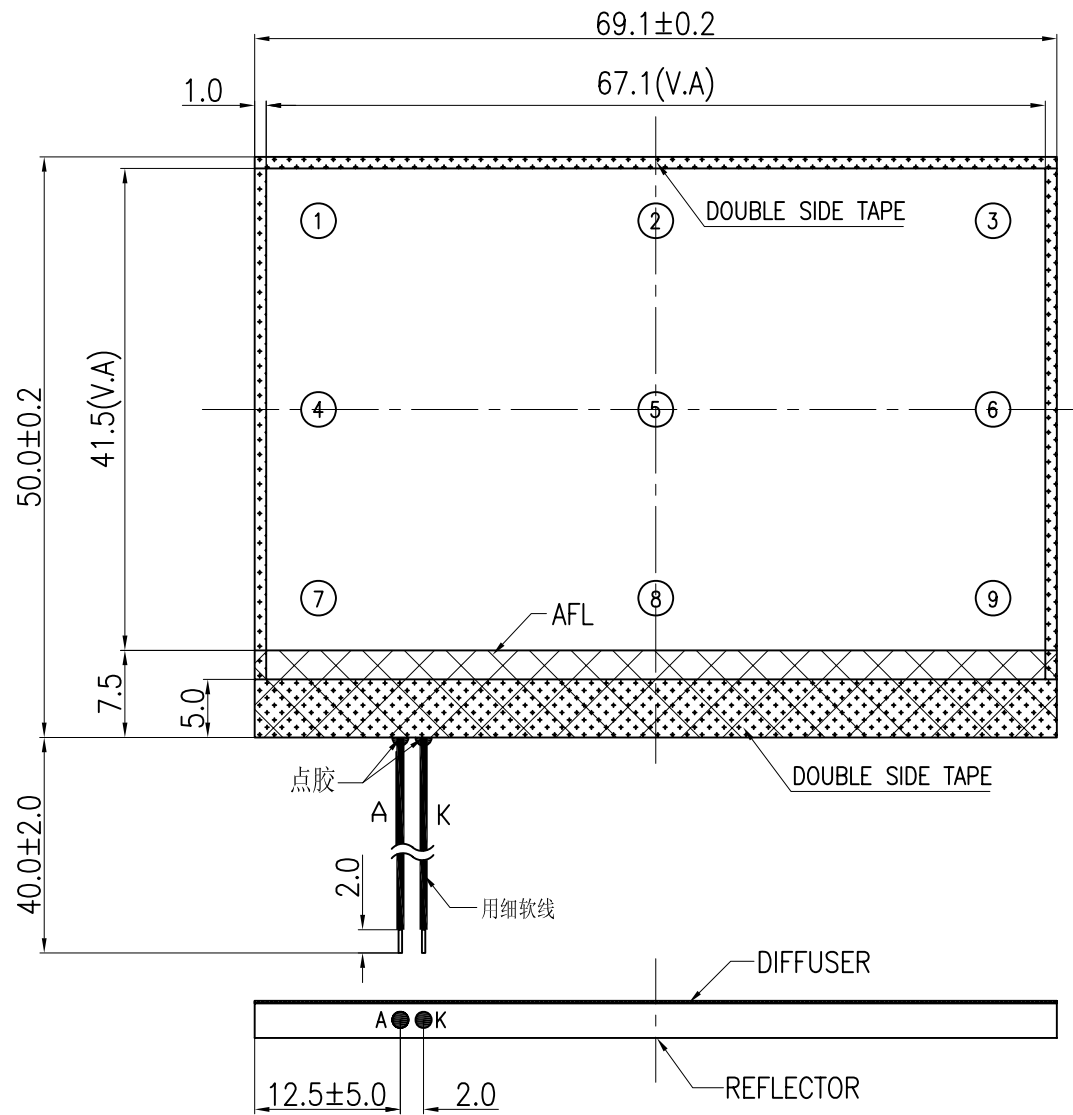
NO	1	2	3	4	5	6	7	8	9	10	11	12	13	14	15	16	17	18
PIN	NC	NC	IRS	HPM	P/S	C86	VR	VO	V4	V3	V2	V1	VRS	VEXT	CAP2-	CAP2+	CAP1+	CAP1-
NO	19	20	21	22	23	24	25	26	27	28	29	30	31	32	33	34	35	36
PIN	CAP3+	VOUT	VSS	VDD	D7	D6	D5	D4	D3	D2	D1	DO	RD	WR	AO	RES	CS1	NC

NOTES:

1. DISPLAY TYPE: FSTN, TRANSFLECTIVE/POSITIVE.
2. DRIVE METHOD: 1/65DUTY, 1/9BIAS, VOP=10.0V, VDD=3.0V.
3. VIEWING DIRECTION: 6 O'CLOCK.
4. IC DRIVER: NT7532 COG.
5. OPERATING TEMP: -20°C ~ 70°C.
6. STORAGE TEMP: -30°C ~ 80°C.
7. LED BACKLIGHT: EDGE WHITE LEDA-LEDK=3.1V
8. ALL UNMARKED TOLERANCES: ±0.2.
9. RoHS COMPLIANT.

CUSTOMER APVL		DATE	
DRAWN		SCALE	TITLE <b>MODULE</b>
DFTG CHK		UNIT mm	
ENGR CHK		MODEL MI12864A1-G	
APPROVAL		DWG NO 01	
MULTI-INNO TECHNOLOGY CO.,LTD.		PAGE 1/5	

01	更改背光外形尺寸
VERSION	MODIFYCONTENT



DOUBLE SIDE TAPE

AFL

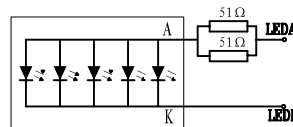
ELECTRICAL/OPTICAL CHARACTERISTICS (T=25°C):

ITEM	MIN.	TYPE	MAX.	UNIT	CONDITION
Forward Voltage	3.0	3.1	3.4	V	
Forward Current	--	75	100	mA	5.0
Power Dissipation	--	232.5	340	mW	5.0
Luminance	230	250	--	cd/m <sup>2</sup>	5.0
Wave length Range	--	--	--	nm	White
Operating Temp Range	-30		70	°C	
Storage Temp Range	-40		80	°C	

Unmarked tolerance ±0.2mm

备注: 亮度值为图示9个测试点的平均值,  
亮度偏差为±30%,均匀度>70%  
测试条件以测试电路为准.

LED: 5\*1=5 DIES



测试电路

--	更改电性参数 18/6-07
VERSION	MODIFYCONTENT

CUSTOMER APVL		DATE	
DRAWN		SCALE	
DFTG CHK		UNIT	mm
ENGR CHK			
APPROVAL			
TITLE LED BACKLIGHT FOR MI2864A1-G		MODEL 90-0219-00/R	
MULTI-INNO TECHNOLOGY CO.,LTD.		DWG NO 00	PAGE 4/5