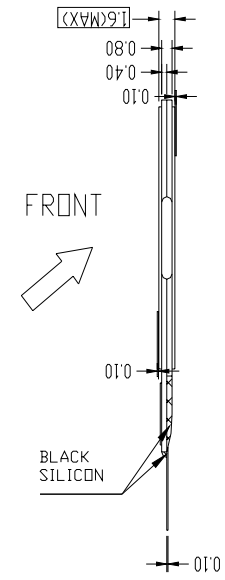
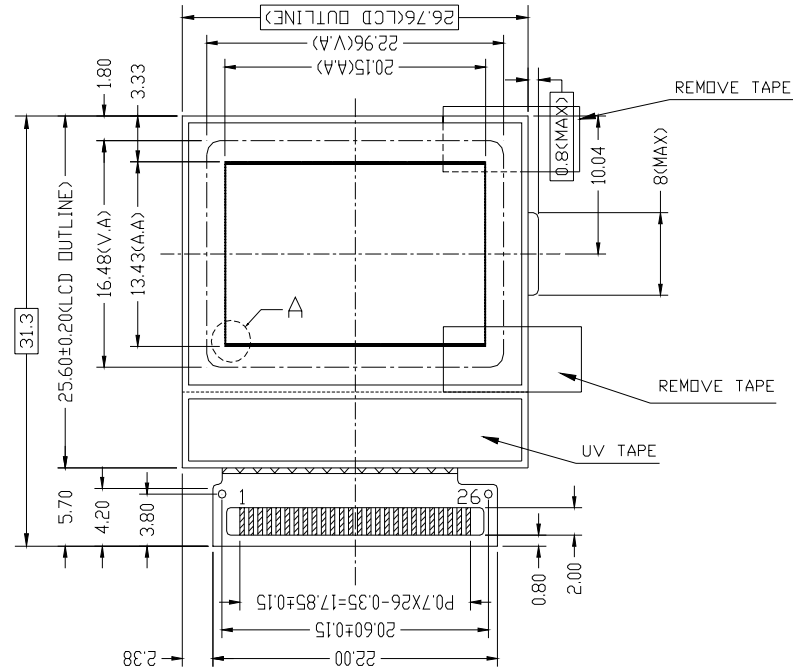
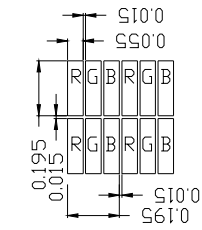




NO.	SYMBOL
1	PS0
2	PS1
3	CS
4	RES
5	D/C
6	R/W
7	E
8	DB0
9	DB1
10	DB2
11	DB3
12	DB4
13	DB5
14	DB6
15	DB7
16	CS
17	VDD_IO
18	VCI
19	RVSS
20	CVSS
21	VSS
22	VL2
23	VL3
24	VL4
25	VL5
26	VOUT



DETAIL A(BM):



- NOTES:
- 1.DISPLAY TYPE: CSTN
 - 2.VIEWING DIRECTION: 6:00
 - 3.DRIVE IC: SSD1788
 - 4.POLARIZER MODE: TRANFLECTIVE/NEGATIVE
 - 5.DRIVE METHOD: 1/64 DUTY 1/8 BIAS
 - 6.VDD: 3V
 - 7.VLCD: 12.0V
 - 8.OPERATING TEMP: -20°C -- 70°C
 - 9.STORAGE TEMP: -30°C -- 80°C
 - 10.UNMARKED TOLERANCE: ±0.30

MULTI-INNO TECHNOLOGY CO.,LTD.

DRAWN BY:	TITLE: MI9664CK	
CHECKED BY:	DWG NO: G-3	
APPROVED BY:	DWG NAME:	UNIT: mm
CONFIRMED BY:		SHEET NO: 1 OF 1